



52ND
ANNUAL REPORT
वार्षिक प्रतिवेदन
2013-14

**NATIONAL INSTITUTE FOR
MICRO SMALL AND MEDIUM ENTERPRISES**

राष्ट्रीय सूक्ष्म, लघु और मध्यम उद्यम संस्थान (निम्समे)

(An organisation of Ministry of MSME Govt. of India)

(सू.ल.म.उ.मंत्रालय भारत सरकार का संगठन)

Yousufguda, Hyderabad-500045. Telangana.

यूसुफगुडा, हैदराबाद-५०००४५. तेलंगाना.



52ND ANNUAL REPORT

वार्षिक प्रतिवेदन

2013-14



NATIONAL INSTITUTE FOR MICRO SMALL AND MEDIUM ENTERPRISES

राष्ट्रीय सूक्ष्म, लघु और मध्यम उद्यम संस्थान (निम्समे)

(An organisation of Ministry of MSME Govt. of India)

(सू.ल.म.उ.मंत्रालय भारत सरकार का संगठन)

Yousufguda, Hyderabad-500045. Telangana.

यूसुफगुडा, हैदराबाद-५०००४५. तेलंगाना.

Contents

1. Overview of ni-msme	1
a. About ni-msme	1
b. Genesis	2
c. Organisational Structure	4
d. Organisation and Management	5
e. Commitment to Quality of Public Services	5
<hr/>	
2. Thrust areas and Gamut of Activities	7
<hr/>	
3. ni-msme - The Institution	10
<hr/>	
4. Accomplishments (2013-14)	17
<hr/>	
5. ni-msme Programmes and Activities (2013-14)	23
a. International Training Programmes	27
b. Workshops and Seminars	29
c. Research & Consultancy	31
d. Programmes under the scheme for Assistance to Training Institutions (2013-14)	32
e. Visits	34
f. Events	35
<hr/>	
6. Annexures	
Annexure 1-5: Programmes	
Annexure 6: Governing Council	
Annexure 7: Executive Committee	38
<hr/>	
7. Financials	56



1. Overview of ni-msme

About ni-msme

In 1960, the National Institute for Micro, Small and Medium Enterprises (**ni-msme**) was set up as an autonomous institution under the Ministry of Industries, Government of India (GoI) with the charter of assisting in the promotion, development and modernisation of small and medium enterprises in India. This was to be effected mainly by creating a pro-business environment that would enable the success and prosperity of micro, small and medium enterprises (MSMEs). Since then, **ni-msme** has made memorable contributions to enterprise development - both nationally and internationally.

With its focus on the enterprise, the entrepreneur and the emerging trends in enterprise development, **ni-msme** has been consistently assisting MSMEs to face challenges wrought by rapid globalisation and the impact of Information Technology (IT) and technological developments on businesses. Since its launch as a training organisation for enterprises and entrepreneurs, **ni-msme** has widened the scope of activities to include consultancy, research, extension and IT services. MSMEs and executives have benefited from programmes, workshops and seminars on contemporary themes organised at **ni-msme**.

Notable Global-level Programmes

Some of the Institute's cornerstone interventions reflect the national and international acclaim that **ni-msme** has secured through its excellence and commitment, blending the best of the traditional with smart, modern-day techniques, world-class facilities and continuous exploration and innovation that creates custom-based methodologies:

- The first international programme (1967) conducted with assistance from United Nations Industrial Development Organization (UNIDO)

- Simulation Exercises for Small Industry Management (SIMSIM) (1987)
- The United Nations Educational, Scientific & Cultural Organization (UNESCO) Chair (1997)
- International Workshop on Promotion of Small and Medium Enterprises (PROSME) (1998)
- Export Production Villages (1999)
- Trade Related Development Programme for Women (TREAD) (2000)
- Entrepreneurship Development in the New Millennium (2001)
- Training of Mothers of Child Labour in Income Generation Skills Under Child Labour Eradication Project by International Labour Organization (ILO) (2001)
- Business-to-business (B2B) Transactions with Uganda, Namibia, South Africa, Bhutan, Nigeria, Sudan and Ghana

Over the years, **ni-msme** has expanded its reach to embrace the entire developing world. So far, over 135 developing countries have profited from its expertise, knowledge and resources. The programmes are global in nature. Every year, more than 500 executives from across the world benefit from its training. The Institute is associated with prestigious world bodies such as UNIDO, UNESCO, ILO, Commodity Futures Training Commission (CFTC), United Nations Children's Fund (UNICEF), Afro-Asian Rural Reconstruction Organization (AARRO) and ARB Bank (Ghana). The Institute's collaborative efforts with various international organisations and institutions make its endeavours more meaningful and extend their reach.

The infrastructure and facilities at **ni-msme** are at par with international standards. They reflect the natural

excellence that qualifies every activity and attribute of the Institute. **ni-msme** has embraced technology for efficiency and to keep pace with the times. Its state-of-the-art facilities, pleasant environs, proven methodologies that are supported by a modern academic infrastructure, experienced faculty, expert consultants and resource persons give it an edge. Above all, the Institute's decades of experience, complemented by a modern and creative outlook, set the bar for the standard of services. **ni-msme** is acknowledged as one amongst the world's best training, research and extension facilities.

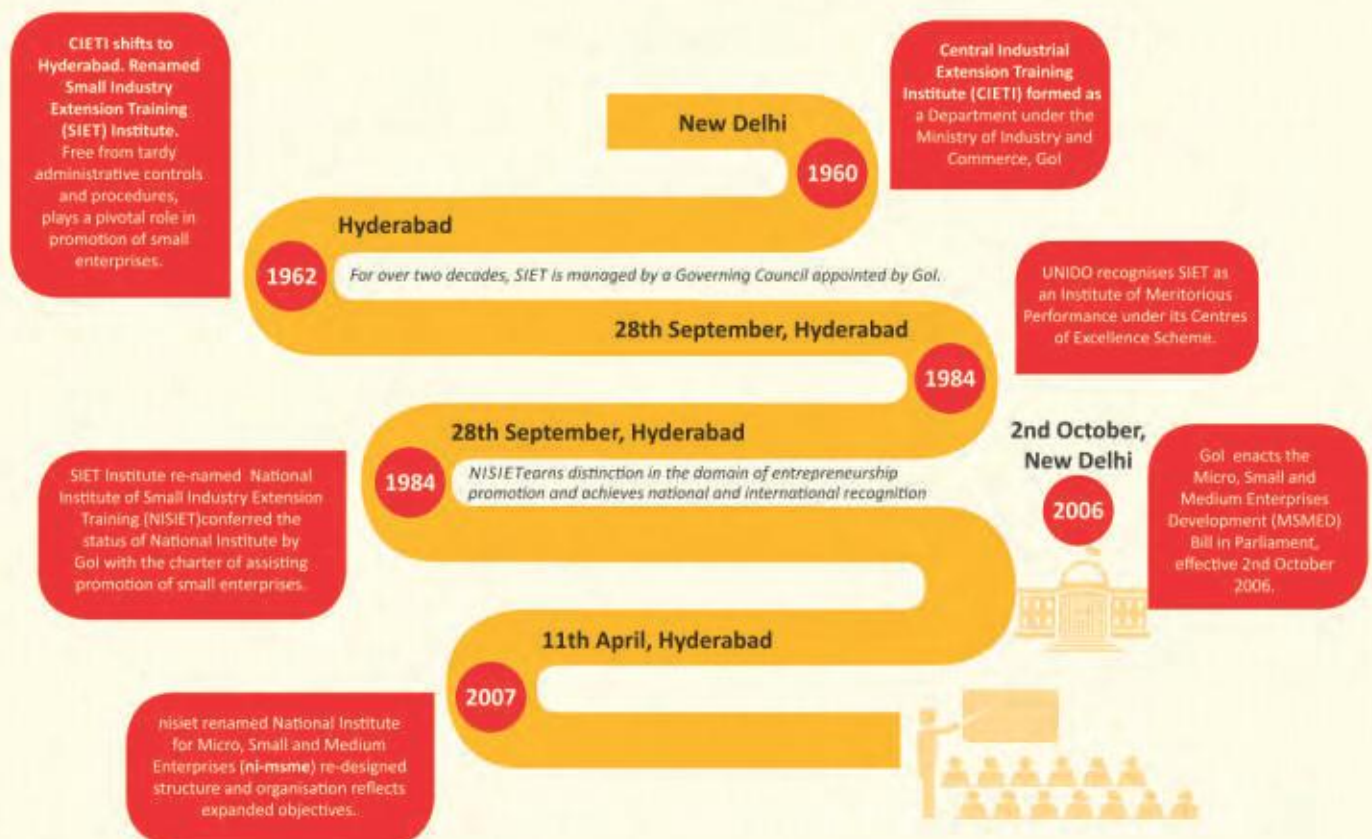
ni-msme Charter

Initially, the Institute's primary objective was set as the training of trainers (ToT). Today, in light of technological developments and dynamic stakeholder requirements, the Institute's role has broadened as well.

The scope of activities now includes consultancy, research, extension and information services. The arrival of IT has served to broaden the horizons:

- Dramatic increase in long-term and diploma programmes
- Ensuring that research, consultancy and services are in-step with current innovations in IT
- Calling attention to topical issues through conferences, seminars and its programmes
- Greater focus on need-based programmes
- Shift towards a client-driven approach and innovative interventions
- Programme evaluation
- Greater emphasis on research publications

Genesis



ni-msme is an organisation of the Ministry of MSME, GoI [formerly Ministry of Small Scale Industries (SSI) & Agro & Rural Industries (ARI), GoI]. ni-msme registered at Hyderabad in Andhra Pradesh under Public Societies Registration Act I of 1350 Fasil, with effect from 1st July 1962

Accomplishments so far

With its focus on enterprise and entrepreneurs, **ni-msme** has constantly focused on emerging global and national trends in enterprise development and assisted MSMEs in facing challenges wrought by rapid globalisation and the consequences of technological developments. **ni-msme** has conducted pioneering programmes globally, or has actively participated in some innovative studies that has led to its recognition as the world's leading training, research and extension facilities.

- Conducted a Pioneering Research Study in Achievement Motivation in association with Prof. David McClelland when conducting the Kakinada Experiment (1964)
- Organised the First Executive Laboratory in India (1964)
- Conducted the First International Training Programme in Small and Medium Enterprises (SME) Development (1967)
- Developed the Concept of Appropriate Technologies in Indian Industry (1969)
- Established a Specialised Information Centre, the Small Enterprises National Documentation Centre (SENDOC) (1971)
- Assisted the Tanzanian Government in establishing Small Industries Development Organization (SIDO) (1974)
- B2B Transactions with Uganda, Namibia, South Africa, Bhutan, Nigeria, Sudan, Cameroon and Ghana (2000 - 2007)
- International programmes for Bank of Ghana (2006-08)
- All-time record of 28 international executive development programmes, five of them specially for African countries (2007-08)
- Outreach programme for African women executives as a fore-runner to the India-Africa Forum Summit (2008)
- International programmes for Bangladesh Small & Cottage Industries Corporation (BSCIC) (2008-09)
- Establishment of Intellectual Property Rights Facilitation Centre (IPFC) (2009)
- ATI Scheme of Ministry of MSME (2009-10)
- Skill Up-gradation Training Programmes for the Registered Building & other Construction Workers (2012-13)
- International Training Programmes on Food Processing for Afro-Asian Countries (2012-13)
- NIFTM Programmes (2013-14)
- International Workshop on Natural Dyes (2013-14)
- Achievement of High Income Generation (2013-14)

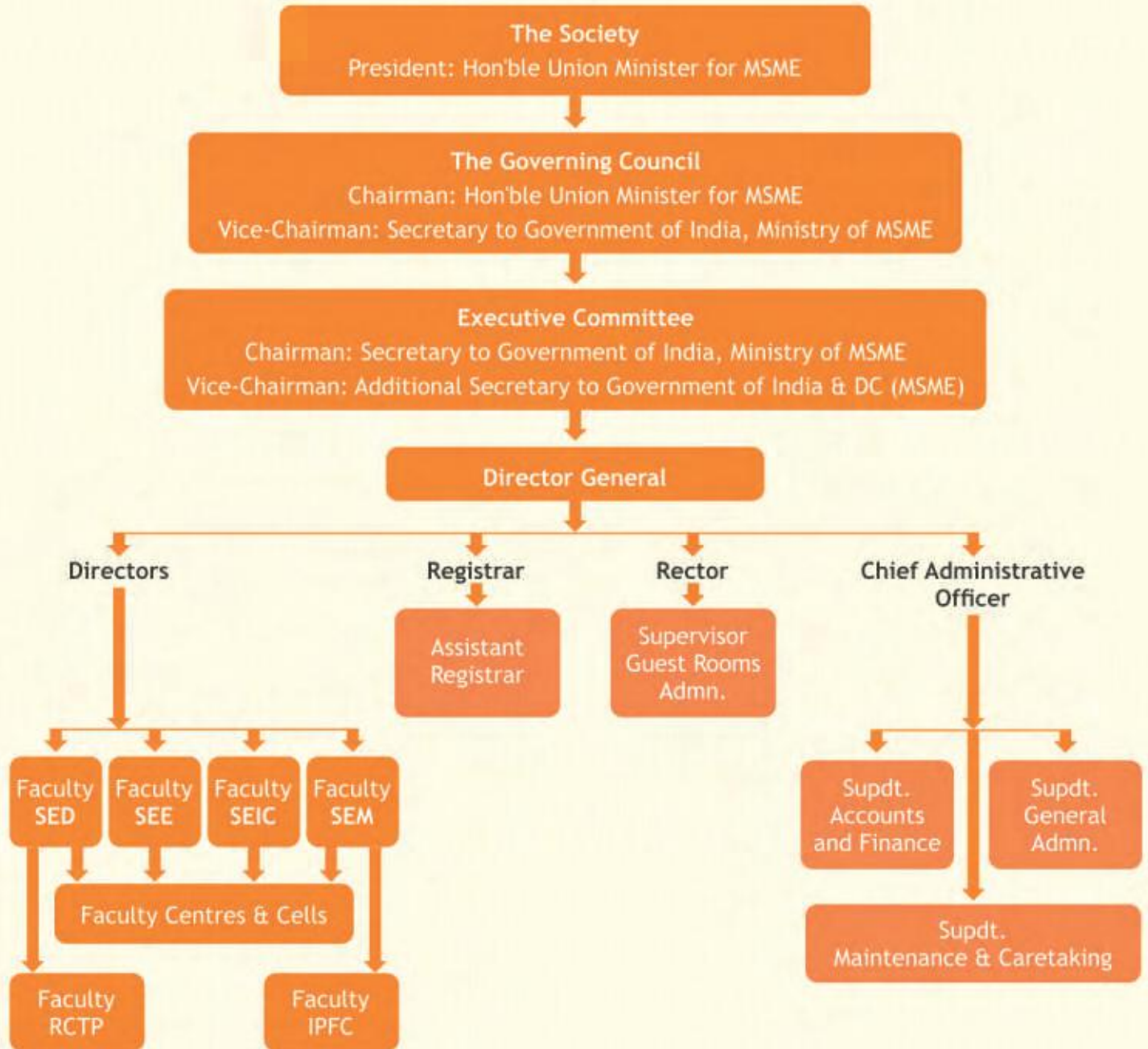
A Peek Into Some Commendable Research and Consultancy Studies

ni-msme has been instrumental in conducting several outstanding research and consultancy studies:

- Techno-economic feasibility studies in Textiles and Handicrafts Sector of Arunachal Pradesh (2001)
- Study on identification of projects for specific resource base in Northeastern Region (2003)
- Vision document for empowering women in Mauritius (2003)
- Project profiles on SMEs for Mauritius (2004)
- Information requirements of SMEs (2005)
- Hand-holding, monitoring, implementation of MSME Clusters (2004-07)
- Hand-holding of Scheme of Fund for Regeneration of Traditional Industries (SFURTI), Handlooms, Handicrafts Clusters (2006 onwards)
- Evaluation study of ongoing schemes of NBCFDC in the State of Tamil Nadu (2008)
- Evaluation of NBCFDC Schemes in the Union Territory of Puducherry, Goa and Kerala (2009-10)
- Evaluation of the functioning of innovative and experimental programmes on schools run by Bhagavatula Charitable Trust (BCT) under Rajiv Vidhya Mission, Andhra Pradesh in Visakhapatnam District (2009-10)
- Evaluation Study for more effective implementation of schemes under Ambedkar Hast Shilp Vikas Yojana (AHVY), sponsored by the Office of Development Commissioner (Handicrafts), Ministry of Textiles, Gol, New Delhi (2009-10)
- Preparation of Training Modules for Ministry of Housing & Urban Poverty Alleviation (MHUPA), Gol (2009-10)
- Execution of research studies sponsored by the MHUPA, Gol (2009-10)
- Resource Centre for Traditional Paintings in Handicrafts (2010-11)
- Cluster Resource-cum-Monitoring Agency for 37 Clusters in A.P & 24 Clusters in Kerala (2010-11)
- Evaluation of the Scheme "Export Promotion (Training Programmes on Packaging for Exports)" sponsored by the DC(MSME) (2013-14)
- GIZ Project (2013-14)
- Evaluation of Pochampally Handloom Cluster sponsored by DC (Handlooms) (2013-14)

ni-msme Organisational Structure

Organogram



Organisation and Management

The management of the Institute rests with the Society and Governing Council appointed by Gol. The Hon'ble Union Minister for MSME is the President of the Society and the Secretary to Gol, Ministry of MSME is the Vice-President of the Society.

The Governing Body acts through the Director General, Mr. M. Chandrashekar Reddy. The Director General is the academic and executive head of *ni-msme*. He functions under the guidance of the Governing Council or the Society or Executive Committee. The academic activity is organised under different academic Schools of Excellence and the Chief Administrative Officer is the head of overall administration and general administrative matters under the guidance of the Director General.

Administration of the Society

The affairs of the Society are managed, administered, directed and controlled through the Governing Council constituted by Gol as per Rule 22 (a & b) of Rules and Regulations of the Society. The Society, as provided under Rule 3 of Rules and Regulations, was constituted by Gol.

Shri Kalraj Mishra, Hon'ble Union Cabinet Minister, Ministry of MSME, Gol is the President of the Society and Chairman of the Governing Council of *ni-msme*.

Mr. Madhav Lal, IAS, the Secretary to the Gol, Ministry of MSME is the Vice- President of the Society, Vice-Chairman of the Governing Council and Chairman of the Executive Committee.

Mr Amarendra Sinha, IAS, Additional Secretary to the Gol & Development Commissioner (MSME) is the Vice-Chairman of the Executive Committee.

Mr. M. Chandrasekhar Reddy is the Director General of the Institute.

Details of Governing Council and Executive Committee are provided in the Annexure VII and VIII

Statutory meetings (2013-14)

Executive Committee Meetings

As mandated, the members of the Executive Committee met periodically to review the action taken on the previous decisions and took decisions for further

improvement of the Institute's activities as well as its infrastructure.

The 12th meeting of the Executive Committee was held on 18th April 2013 at the Board Room, *ni-msme*, Hyderabad.

The 13th meeting of Executive Committee was held on 16th August 2013 at Udyog Bhavan, New Delhi.

The 14th meeting of the Executive Committee of *ni-msme* was held at Udyog Bhavan, New Delhi on 28th January 2014.

Commitment to Quality of Public Services

ni-msme Citizens' Charter

As specified in the Result Framework Document (RFD), Sevottam Compliant Citizens' Charter, a Sevottam Compliant Grievance Redress Mechanism is mandatory. Accordingly, a Citizens' Charter has been adopted for the Institute and the same can be viewed at the Institute's website.

The objectives of the Institute are to conduct training programmes or seminars and workshops for national and international executives, for employees of all MSME service providers. It undertakes and executes research and consultancy projects for the development and promotion of enterprises, offers skill-based training programmes in IT to educated youth in order to upgrade their skills, and provides information relating to MSME to citizens and clients.

VISION

To create a vibrant and entrepreneurial society

MISSION

To facilitate the growth of entrepreneurial culture and the development of MSMEs

COMMITMENT

The Institute is committed to provide efficient assistance, with transparency and courtesy to citizens and MSMEs.

The Institute confidentially maintains personal and business information disclosed to it by stakeholders when conducting programmes or projects and reviewing policies.

Grievance Cell

To bring about transparency and to enable setting up of an effective Public Grievance Redress and Monitoring System, **ni-msme** has set up a Grievance Cell and Information and Facilitation Counters. The state of public grievances serves as a barometer to gauge the efficiency and effectiveness of the administrative processes and policies of the Institute and the Grievance Cell and the Counters form important components of the machinery set up to facilitate the timely redressal of public grievances. Complaints may be lodged at the Grievance Cell and information may be sought from the facilitation counters. The addresses are provided below:

Grievance Cell

Chief Administrative Officer
ni-msme, Yousufguda
Hyderabad 500 045
Tel. 040-23608544/Extn. 203
Fax No. 040-23608547
Website: www.nimsme.org
E-mail: cao@nimsme.org

Information and Facilitation Counters

Ground floor of SENDOC building, **ni-msme**
Tel. 040-23608544/Extn. 235

1. Ground floor of New Training building, **ni-msme**
Tel. 040-23608544/Extn. 217/260
2. Ground floor of 'F' Block of Guest Room Complex,
ni-msme
Tel. 040-23608544/Extn. 270/280

Right to Information (RTI) Act

For information under the Right to Information (RTI) Act, 2005, citizens may approach the Public Information Officer (RTI) located in the New Training Building (Ground Floor: Registrar's Office), **ni-msme**, Yousufguda, Hyderabad 500 045 on any working day.

During the year 2013-14, the Institute received sixteen applications, all of which were replied to.

Address of Public Information Officer

Assistant Registrar
Registrar's Office
ni-msme, Yousufguda, Hyderabad 500 045
Tel. 040-23608544/Extn. 270/280
Fax No. 040-23608547



2. Thrust areas and Gamut of Activities

Thrust Areas

In line with the national objective of economic development through industrialisation and based on the expertise available, ni-msme has identified some thrust areas that require prominence and exploration. These are:

- Skill Development
- Entrepreneurship Research
- Women Entrepreneurship
- Technology Upgradation and Transfer
- Policy Issues
- NGO Networking
- Environment Concerns
- Cluster Development
- Management Consultancy
- Quality Management Services
- Financial Services
- Information Services
- Intellectual Property Rights (IPR)

Enterprise promotion and entrepreneurship development being the central focus of ni-msme's functions, the Institute's competencies converge in the following areas:

- Enabling enterprise creation
- Capacity building for enterprise growth and sustainability
- Creation, development and dissemination of enterprise knowledge
- Diagnostic and development studies for policy formulation
- Empowering the under-privileged through enterprises

Gamut of Activities

The promotion and development of MSMEs involves a wide range of activities that must be taken up properly and at the right time. ni-msme ensures that entrepreneurs benefit from its experience and can contribute to the growth and prosperity of their enterprises. ni-msme conducts a wide range of activities: trainings, surveys, studies, consulting, counselling, IT services, besides bringing out regular publications for national and international participants.

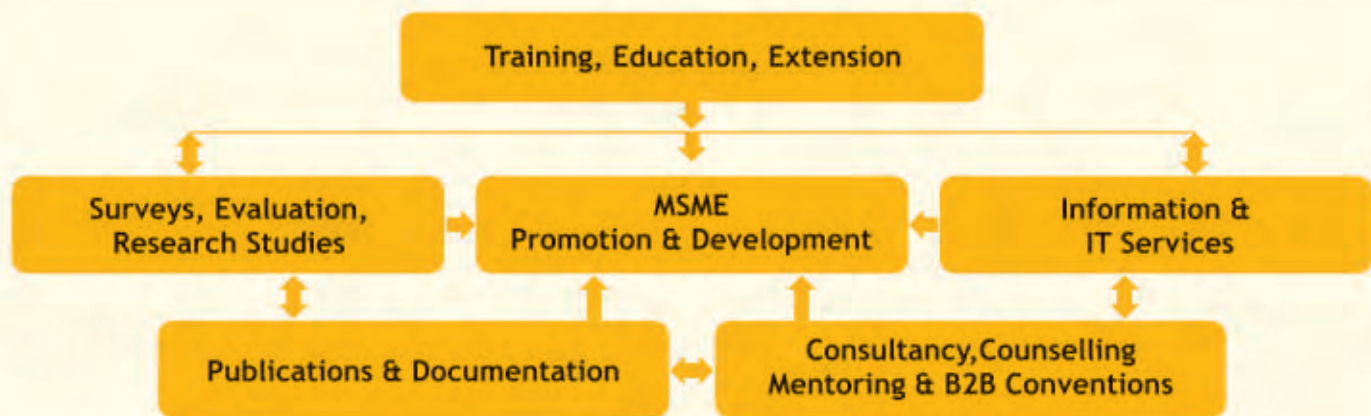
The spectrum of the Institute's endeavours is shown below:

Strategies

- Cluster Development
- Entrepreneurship Micro-finance
- Business Development Services
- Sub-sector development
- Management Development Programmes
- IT Programmes

Programmes

- National - Announced and Sponsored
- International - Announced and Sponsored
- Customised and Collaborative Programmes



Training

Training develops skills and expertise in the area where people are trained and brings about a positive attitude, increasing motivation levels, thereby improving organisational results. On the other hand, disseminating knowledge also provides an opportunity to shed more light on different facets of the topics being taught. **ni-msme** is engaged in continuous dissemination of knowledge on SME development through training interventions. A pioneer in training and education, **ni-msme** consistently evolves innovative training methods. The Institute associates with reputed organisations across the world and helps participants stay ahead of the technology curve. Till date, **ni-msme** has conducted a wide range of programmes for national and international participants.

Research

Research is the tireless process of enhancing, developing and evolving. With an incessant spirit of discovering better ideas and methods, **ni-msme** strives to provide the best researched solutions to SME needs. **ni-msme** research spans policy formulation, information technology, logistics, business management and many other areas.

Consultancy

ni-msme provides consultancy services to SMEs for capacity building and efficient operations. The Institute has a panel of experts with diverse specialisations, who provide strategies for overall development and revival of industries. The core focus of the centre is on providing new technologies and enhancement solutions that are oriented towards resolving issues of the future.

Information Services

Information is a strategic factor in the development of any industry, whether large or small. In today's dynamic business environment, the heightened importance of information is well acknowledged. The right information at the right time provides an edge over competition. **ni-msme**, the knowledge institution, provides access to value-added information through its vast database.

Extension Services

The Institute's research findings are taken to the doorstep of enterprises through extension services, in order to nurture them through their growth and progression. Such services also encourage entrepreneurship amongst youth and lead to social empowerment.

Educational Programmes

The Institute's educational programmes are aimed at imparting entrepreneurial knowledge and skills amongst youth and trainers, so as to develop human resources in entrepreneurship.

Seminars and Workshops

The seminars and workshops are refresher programmes for top executives and officials, addressing contemporary topics of relevance to SMEs.

The faculty at **ni-msme** is rich and experienced with knowledge and skills that have been accrued and tested over time. This sets the bar on the quality of the specialised and innovative training programmes, seminars and workshops organised by the Institute.

Academic activities National Programmes

Announced

ni-msme offers and conducts regular training programmes for the development of MSMEs within India and in other developing countries. The regular programmes in different disciplines vary from one week to two weeks to suit the requirements of client organisations.

The Institute conducts IT programmes for educated, unemployed youth to develop their IT skills. IT programmes are also conducted for the benefit of employees or executives of sponsoring organisations.

Sponsored

Special training programmes are also conducted at the request of client organisations, as per their needs. Programmes are conducted either on-campus or off-campus. Entrepreneurs or industrialists are tapped for the customised, off-campus programmes sponsored by or initiated by Small Industry Associations of different districts or states or organisations, at locations preferred by those organisations.

Seminars and Workshops

Seminars and workshops are refresher programmes for top executives and officials that address contemporary topics of relevance to the MSME sector.

Executive Development Programmes

A calendar listing programmes scheduled under Executive Development Programmes for the year is available at the ni-msme website. These include Short-term and Long-term Training Programmes, Seminars or Workshops and Educational Programmes. Their duration ranges from one day to 12 weeks.

Customised national programmes developed for officials from various government departments, PSUs, banks or ministries are also scheduled.

Longer term programmes are generally, but not necessarily, developed for international participants. Long term Certificate Programmes are available for those hoping to get certified in different areas of IT. Fees and other details are available on the website.

Announced and Sponsored International Programmes

Long-term programmes are offered and conducted to suit the needs of developing countries. At the request of sponsoring organisations such as CFTC, Ministry of External Affairs (MEA), ILO and UNIDO, BSCIC, ARB Bank (Ghana), and the Central Bank of Srilanka, customised programmes are also arranged.

Research and Consultancy

ni-msme has long and considerable experience in conducting research studies, which have contributed significantly to accomplishing the Institute's objectives. The research projects taken up so far are multifaceted and deal with micro and macro aspects of small enterprise management, extension, development and promotion.

With a long experience in conducting a wide variety of studies related to assessment, evaluation, impact, problem identification, diagnostic and problem solving approaches, behavioural aspects, marketing and other managerial aspects, modernisation, technology transfer and so on, ni-msme continues to serve its clientele through its research activities.

Information and Library Services

ni-msme's SENDOC has been suitably strengthened to provide a comprehensive database on domestic as well as international business opportunities, trade enquiries, regulatory systems, etc., that are of value to MSME entrepreneurs. Such database services are also offered on-line to MSME associations in India.

The Institute's Library services are utilised by a large number of members during the working hours, as well as, before and after office hours.

Publications

Annual Reports and monthly news bulletins are issued so as to transparently provide information on the activities and services of the Institute. ni-msme publishes a research quarterly the Small Enterprises Development Management and Extension (SEDME) journal as part of its academic activities. The Institute also publishes books and manuals related to different aspects of MSMEs, which supplement the training inputs.



3. ni-msme - The Institution

Intellectual growth facilities

Since its inception, ni-msme has rendered services to MSMEs. ni-msme's intellectual activities are pursued by its four schools of excellence, through their eleven existing centres, which also include two theme focused cells devoted to specific disciplines. The schools themselves are inter-disciplinary in nature, focusing on training, research, consultancy, education, extension and IT services in their areas of expertise for the benefit of client organisations, entrepreneurs, association leaders, government officers, bureaucrats, public-private-partnership (PPP) company executives, trainers and others.



Pioneer Training Programmes

ni-msme has initiated several specialised, tailor-made training programmes — the first of their kind for top-notch MSMEs. Some are listed here:

- Management development programmes
- Programme on area development
- Programme on feasibility survey and analysis
- Programme on industrial estates
- Programme for young engineers and technocrats
- Vertically integrated course on orientation through small industry development for IAS and IES Officers
- Effective Development Programmes for rationalised employees of State and Central Public Sector Units (PSUs)
- Exclusive programmes for international executives on various themes on a regular basis
- Enterprise Development and Government Effectiveness (EDGE) Programme for Sri Lankan administrative officials
- Sensitivity training in production planning and control
- Faculty development programmes
- Programmes on cluster development
- Programmes on focused themes for executives from the North-East

Campus and facilities

Infrastructural facilities

Infrastructure provides the framework for better and efficient functioning of an organisation. ni-msme's facilities are spread over many hectares of sylvan surroundings and are ranked among the best in the world. Apart from the facilities for teaching and training, the Institute provides an excellent library that offers internet facility with round-the-clock reference-cum-reading rooms. Spacious and ultra-modern

air-conditioned classrooms and conference halls, with state-of-the-art instructional and functional gadgets, computers with specific software for cutting edge IT courses, advanced laptops and other instructional tools make learning at ni-msme a pleasant pursuit. The infrastructure at the Institute includes:

Auditorium : 350 persons capacity

Conference Hall : 125 persons capacity

18 Lecture Halls : 30 - 40 persons capacity (each)

Faculty work-stations with support services

Guest Room Complex

The Institute's clean and comfortable guest rooms, with modern amenities on par with international standards, can accommodate over 250 guests. The hostel complex has clean and hygienic dining facilities serving appetising cuisine that make the complex a home away from home for the participants. The hospitality wing has the following features:

- Multi-cuisine mess with three dining halls
- Accommodation - 130 rooms that can accommodate up to 260 persons
- Guests and participants are accommodated in air-conditioned or non air-conditioned rooms. There are suites for VIPs and dignitaries
- All rooms are equipped with TV, wi-fi and telephone facilities.

Closed circuit cameras

CC cameras with a limited set of monitors are located at some strategic points on the ni-msme campus for surveillance.

Sports and games

Participants at the Institute use the jogging track and gym on the campus. For those interested in playing tennis, a tennis court is available on the campus, as are indoor facilities to play badminton, table tennis, chess and carrom.

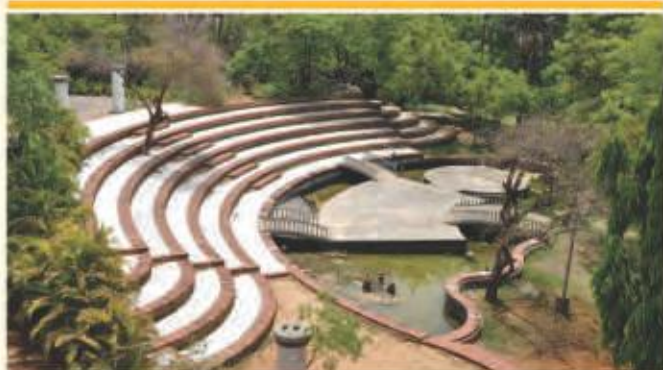
This year, the football ground was made.

Medical Care

A visiting physician visits the Institute daily to attend to any complaints or health issues that anyone in the campus may want to get checked.

Recreational Facilities

The amphitheatre Kalangan provides an ideal platform for staging entertainment concerts and to show-case the creative talents of the participants.



Musings is another outdoor location within the campus, set amidst tall trees beside a pond that is best suited for get-togethers. Utsav is a wonderful location for outdoor or indoor meetings and social gatherings. The Herbal Vista, which houses medicinal and aromatic plants, is well maintained and visitors can soak in the natural ambience.

Our People

Faculty

Director General

The campus activities and the welfare of participants visiting the Institute are closely monitored by the present Residential Director General, Mr. M. Chandrashekar Reddy.

Mr. M. Chandrashekar Reddy has a Master's degree in Economics and a Post Graduate Diploma in Entrepreneurship and UNIDO Certification on Cluster Development. Mr. Reddy has contributed several articles in the area of entrepreneurship development and MSME cluster development and is involved in the publication of books on various themes related to MSMEs. His current areas of interest include entrepreneurship development, cluster development, BDS models, innovation opportunities, business projects and management.

School of Enterprise Development (SED)

Dr. G. U. K. Rao

Dr. G. U. K. Rao is the Faculty Member and Director I/c of SED and Head of C-IPD, and also Head of C-PR of the Institute.

Dr. G. U. K. Rao has expertise spanning across subjects such as regional planning, promotion of agro and food processing industries, development of small and micro enterprises, quantitative analysis, feasibility studies and project formulation among others. He has led and participated in a number of research studies and projects, especially impact studies, project evaluation and industrial potential surveys. Dr. Rao has coordinated many long-term and short-term training programmes. He guides research scholars and delivers guest lectures in his areas of expertise.

Dr. G. P. Vallabh Reddy

Dr. G. P. Vallabh Reddy is the Faculty Member and Rector. He has a Doctoral Degree in Commerce, a Master's Degree in Statistics, a Post-Graduate Diploma in IRPM and a Diploma in Training and Development. Dr. Reddy's areas of specialisation are feasibility studies and self-employment programmes. His contribution in the fields of research and consultancy includes programme evaluation (concurrent and posterior), project evaluation, impact studies, industrial potential surveys, study of large and medium industries and identification of infrastructure needs for industrial development for states. Dr. Reddy supervises training and research and other activities.

J. Koteswara Rao

Mr. J. Koteswara Rao is the Associate Faculty Member at SED. He is an M.Tech (Environmental Engineering) from Jawaharlal Nehru Technological University (JNTU), Hyderabad. He organises training programmes, seminars and workshops and associates with research work in the areas of Environmental Monitoring Science and Technology Entrepreneur

Development, Environmental Issues in Chemical and Pharmaceutical Industries, Resettlement and Rehabilitation, Solid, Hazardous and Bio-Medical Waste Management, Cluster Development and other areas.

K. Suryaprakash Goud

Mr. K. Suryaprakash Goud has a Bachelor's Degree in Mechanical Engineering and Master's Degree in Plastic Engineering. Mr. Goud has organised training programmes in the areas of entrepreneurship, skill development and cluster development for national and international delegates. He was involved in research and consultancy projects sponsored by SMEDA of Mauritius, KVIC, Coir Board and the various state governments. As an Associate Faculty Member in National Resource Centre for Cluster Development, his areas of interest include innovation, entrepreneurship, cluster development, NGOs, micro and small business development.

N. R. Prasad Reddy

Mr. N. R. Prasad Reddy, with a Master's Degree in Statistics from Indore University, is a Consultant (SED). He specialises in the preparation of profiles for low investment projects and planning and promotion of agro industries. At the Centre, Mr. Reddy helps design, coordinate and conduct programmes in the domains of research, training and consultancy.

Vivek Kumar

Mr. Vivek Kumar is a Consultant faculty in SED. He holds twin master's degrees - Master's in Computer Applications and Master's in Business Administration. Mr. Kumar has varied experience in micro-finance, micro-enterprises and rural poverty alleviation through Self-Help Groups (SHGs) and presently works with the **ni-msme** NGO Network (n3) of SED. Mr. Kumar has organised workshops on Urban Poverty Alleviation sponsored by Ministry of Housing and Urban Poverty Alleviation (HUPA), GoI. He has conducted orientation workshops for IMC members under the scheme upgradation of 1396 ITIs through PPP.

School of Entrepreneurship and Extension (SEE)

Dr. C. Rani

Dr. C. Rani is the Director of SEE and CAO. She has a Master's Degree in Business Administration from Andhra University and a doctoral degree from Osmania University. She was also trained in Empowerment of Women through Enterprise Development at Cranfield School of Management, UK. Dr. Rani specialises in the areas of training methods and entrepreneurship development, with a focus on women. She has organised workshops on Enterprise Development in Sri Lanka. Dr. Rani organised national and international programmes on women entrepreneurship and empowerment, programmes for women executives and provided consulting services to NGOs concerned with Export Production Villages, while assisting them in identifying beneficiaries and organising programmes and research in the area of entrepreneurship.

Glory Swarupa

Glory Swarupa holds a Master's Degree in Industrially Oriented Organic Chemistry from National Institute of Technology (NIT), Warangal. She has 15 years of experience in training, research, extension, documentation and consultancy in the fields of Entrepreneurship Development and Science and Technology.

Ms. Swarupa has conducted over 100 training programmes in the areas of Entrepreneurship Development, Faculty Development, Agri-Entrepreneurship Development, Food Processing, Human Resource Management, Natural Resource Management, Transfer of Technology, Eco-friendly Technologies and Fair Trade practices.

Upendra K. Maurya

Upendra K. Maurya is an Associate Faculty Member with SEE. Mr. Maurya has a Graduate Degree in Engineering (B.Tech) from Govind Ballabh Pant University of Agriculture and Technology, Pantnagar. He is actively engaged in training, research and

consulting activities in the area of Entrepreneurship and SME Development. His areas of interest include entrepreneurial marketing, entrepreneurial branding and market research.

School of Enterprise Communication and Information (SEIC)

Dibyendu Choudhury

Prof. Dibyendu Choudhury is faculty member and in-charge of SEIC. He is also a faculty member at SEM. Prof. Choudhury has a B.E. degree in Electronics Engineering from Bangalore University, PGDBM (Marketing Management) from Management & Technological Institute, Kolkota and PGDBM (Systems Management) from Indian Institute of Social Welfare and Business Management (IISWBM), Kolkota. He is pursuing his Ph.D from North Orissa University on Marketing Management.

Prof. Choudhury is an Adjunct Faculty in many prestigious academic institutes in India and abroad. He executed several consulting assignments for multinationals in the past. His research interests are consumer behaviour, e-retailing, entrepreneurship, Customer Relationship Management (CRM) and other areas relating to MSMEs and formulation of sustainable strategies.

School of Enterprise Management (SEM)

P. Udaya Shanker

Mr. P. Udaya Shanker is the Director of SEM. His qualifications include a Master's Degree of Commerce from Osmania University, a Post-Graduate Diploma in Public Accounting from Dr. Ambedkar Open University and a Diploma in Industrial Management from Indira Gandhi National Open University (IGNOU). He has specialised in branches of Management Accounting and Financial Accounting.

Mr. Udaya Shanker is a member of one of the committees of the Hyderabad Chapter of the Institute of Cost and Works Accountants of India and participates in the costing and accounting activities of ni-msme. He has helped develop monitoring measures for advances to priority sector lending and compiled case studies on sick units through diagnostic studies. He has also published articles in various journals of repute.

Dr. N. Srilakshmi

Dr. N. Srilakshmi is the Head and Faculty Member of the Centre for Logistics and Integrated Materials Systems (C-LAIMS) & Intellectual Property Rights Facilitation Centre (IPFC). She is also the Registrar and is responsible for the smooth coordination and take-off of the Institute's academic programmes. She has a Ph.D in Economics from the University of Saurashtra and a Degree in Library and Information Science. She is a UK registered and certified Lead Auditor and Tutor IRCA & EARA for ISO 9001:2000 & 14001:2004 and is also a Certified Oracle 8.0 DBA expert (with Developer 2000). Dr. Srilakshmi has guided Ph.D and M.Phil scholars, coordinated and conducted over 200 national and international programmes on Quality Control Circle (QCC), TQM, ISO 9001 / 14001 & QS 9000 and Internal Quality Auditors (IQA) or Lead auditor's training for ISO 9000 & 14000. Since 1997, she has conducted a one year PG Diploma in Logistics & Supply Chain Management (PGDLSCM) and Post-graduate Diploma in TQM, ISO & Six Sigma (PGDTQM) at the Institute.

G. Jayakar Rao

Mr. Jayakar Rao Gutty, has a Master's Degree in Business Administration with a specialisation in Marketing and Human Resource Management. He has authored and co-authored many articles in management, in the areas of business ethics and corporate governance. He has professional exposure to international markets through business and management consulting to various software companies in India. As a faculty member, he focuses on techniques to improve teaching and training.

V. Swapna

Mrs. V. Swapna is an Associate faculty member in IPR of the School of Enterprise Management. She has a Bachelor's Degree in Textile Technology from Osmania University and has PG diploma in Patents Law from Nalsar University. She has experience in patent analytics in a wide range of industries: textiles, chemical, biotechnology, healthcare, nanotechnology, energy and others. Mrs. Swapna has handled projects for State-of-the-Art Search, Invalidation, Freedom to Operate (FTO), Competitive Landscape and Novelty Assessment. She has knowledge of commercial patents, trademark and business databases.

T. Venkateswara Reddy

Mr. T. Venkateswara Reddy works as a Consultant in the Centre for Industrial Credit and Financial Services (C-ICFS) of SEM. He holds a Master's Degree in Commerce from Nagarjuna University and has specialised in Financial Accounting, Project Appraisal and Working Capital Financing and Management. Mr. Reddy has contributed to case studies of sick units and on monitoring measures for advances to the priority sectors. He has helped to conduct the Workshop on Economic Reforms in the Development of SMEs.

Mr. Reddy is currently engaged in designing and organising training interventions in different areas from finance.

Staff strength

The staff strength of the Institute as on 31st March, 2014 is given below:

Group	Sanctioned strength	Posts filled	Posts vacant
A	23	14	09
B	05	03	02
C	98	65	33
Total	126	82	44



Retirement from service

The following employees retired from the service of the Institute in 2013

S. No.	Name of Employee	Designation	Date of Retirement
A.	Academic Staff		
1.	T. Venkateswara Reddy	Faculty Member	30-06-2013
2.	V. Vishwas Rao	Faculty Member	30-09-2013
B.	Non-Academic Staff		
3.	K. Srisailam	MTA	30-06-2013
4.	Y. Yellaiah	Asst. Binder	30-06-2013
5.	Smt. P. Rajya Lakshmi	Superintendent	31-07-2013
6.	Sattaiah	MTA	05.08.2013 (VRS)
7.	Smt. N. V. Vijaya Kumari	Sr. Stenographer	31-08-2013
8.	D. Surya Rao	Superintendent	31-08-2013
9.	K. Yadagiri	MTA	31-08-2013
10.	Janardhan	MTA	31-10-2013
11.	Ms. Bilquis Fatima	Reference Librarian	30-11-2013
12.	S. K. Jahangir	MTA	31-12-2013

ni-msme Employees' Union Elections

Members of the ni-msme Union

Mr. P. Vishnuvardhan Reddy, Honourable MLA, Government of Andhra Pradesh -
President

Mrs. K. Nagamani and Mr. B. Sanjeev Rao -
Vice Presidents

Mr. K. S. Krishna Mohan - General Secretary

Mr. S. Babu Rao - Joint Secretary

Mr. B. D. P. Ranga Rao - Treasurer

Mr. K. Sai Kiran - Organising Secretary

Mrs. R. Sarala Devi, Mr. N. Yadaiah, Mr. K. Kishan,
Mr. V. Gopal, Mr. G. Ramchander, Mr. K. Pandu
Ranga and Mr. K. Jagan Mohan Rao - Executive
Members





4. Accomplishments (2013-14)

Since its inception as the Small Industry Extension Training Institute, **ni-msme** was dependent on the Government of India for meeting its annual recurring and non-recurring expenditure.

Pursuant to the recommendations of the 5th report of the Expenditure Reforms Commission and the directives from the Government of India, the Institute examined new sources of income and this helped the Institute to become self-supporting. Since 2001-02, the Institute meets its recurring expenditure on its own, every year. However, grants for specific purposes for meeting expenditures such as one time grant and financial assistance at pre-determined hourly rates for conducting entrepreneurship and skill development programmes under the Scheme of Assistance to Training Institutions (ATI) of the Ministry are also extended.

Programme accomplishments

The following table lists the total number of programmes conducted, the number of participants trained and the number of research and consultancy projects executed from the period 1962-63 to 2013-14.

The number of participants trained includes 8,425 executives from 140 different developing countries,

who attended the international programmes conducted exclusively for the nominees sponsored under TCS Colombo Plan and ITEC/SCAAP of the Ministry of Finance and Ministry of External Affairs, in addition to those sponsored by international funding agencies.

In the year 2013-14, the total number of training programmes remained almost at the same level as in 2012-13. The total number of participants decreased by eight per cent due to a decrease in the national sponsored programmes.

There was a decline (17 per cent) in the Research and Consultancy Projects as the projects anticipated from different Ministries or Departments did not materialise.



No. of Training Programmes	No. of Participants Trained	Research and Consultancy Projects
9,878	3,27,809	876

Table NUMBER: Programme performance in the period 1962-63 to 2013-14

The performance for the year 2013-14, compared to the previous year, is shown below.



Programmes 			Activity	Participants 		
2013-14	2012-13	Percentage Growth		2013-14	2012-13	Percentage Growth
1,045 (1,062)	972 (853)	8%	◀ ATI Programmes ▶	30,910 (31,555)	28,443 (25,590)	9%
71 (48)	49 (54)	45%	◀ National Announced ▶	3,685 (3,995)	2,587 (4,067)	42%
170 (170)	291 (175)	-41%	◀ National Sponsored ▶	5,797 (6,000)	11,310 (6,612)	-59%
35 (50)	58 (58)	-5%	◀ Seminars and Workshops ▶	2,466 (2,500)	5,059 (1,653)	-49%
1,321 (1,330)	1,370 (1,140)		◀ Sub-total National ▶	42,858 (44,050)	47,399 (37,922)	
23 (23)	24 (24)	-4%	◀ International Programmes ▶	429 (480)	441 (541)	-3%
10 (15)	12 (12)	-17%	◀ Research and Consultancy Projects ▶	--	--	--
1,354 (1,368)	1,406 (1,176)	-4%	◀ Total ▶	43,287 (44,530)	47,840 (38,463)	-10%

Table NUMBER: Physical performance change Sub-Total to Sub-total

Figure 2: Comparison of Programmes held (2013-14 and 2012-13)

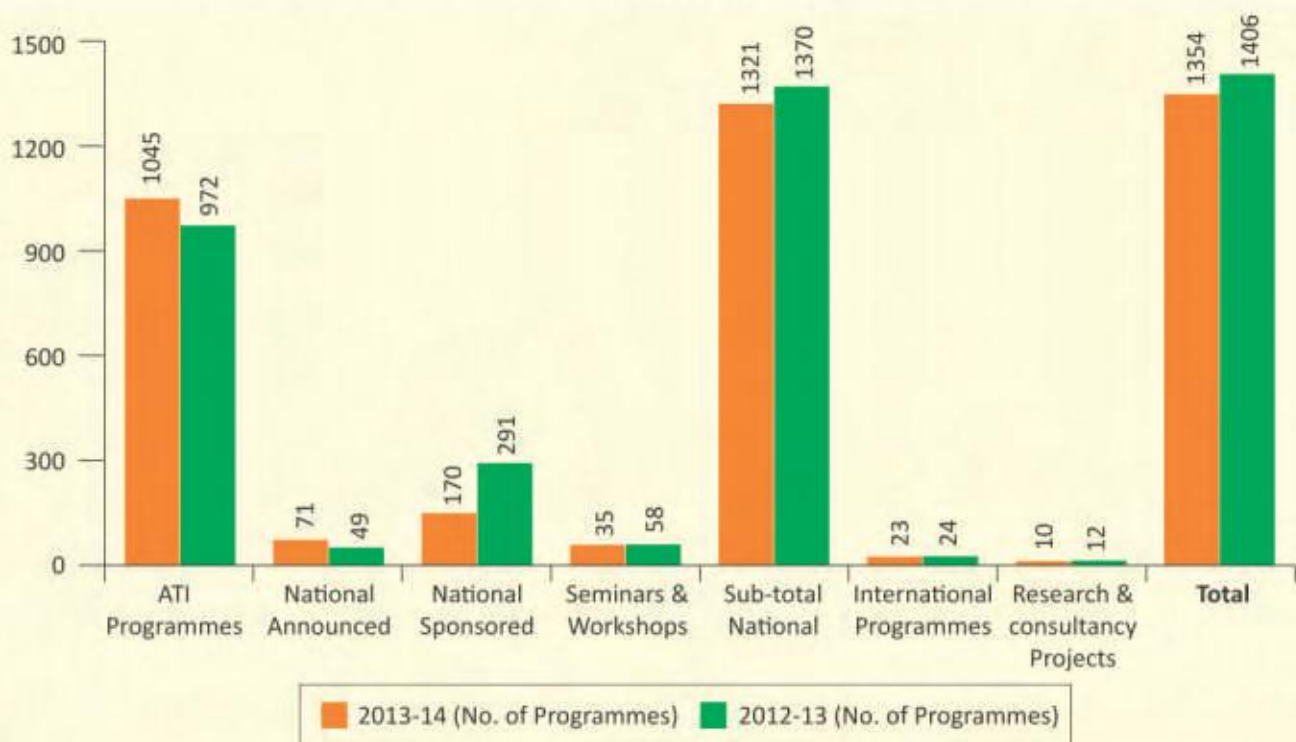
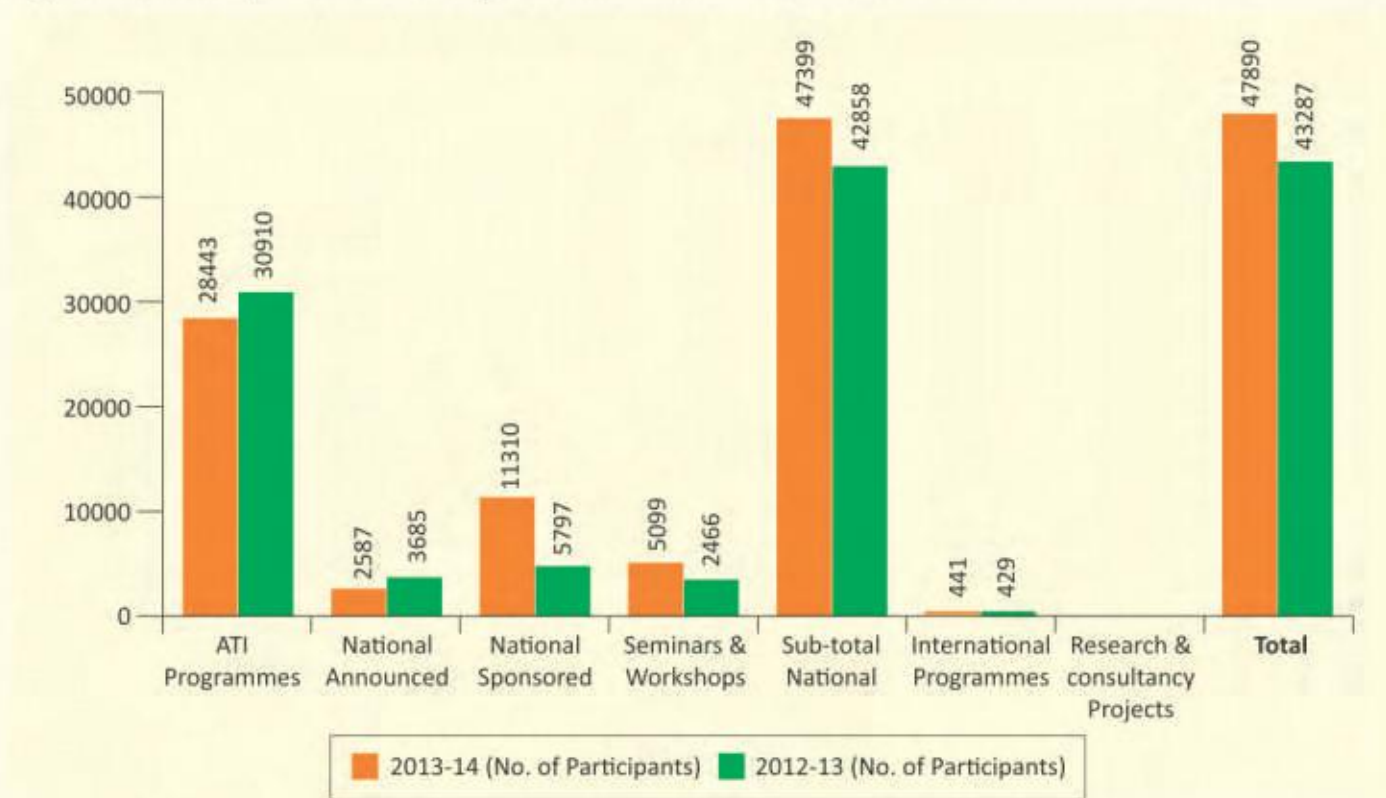


Figure 3: Participants between years 2013-14 and 2012-13



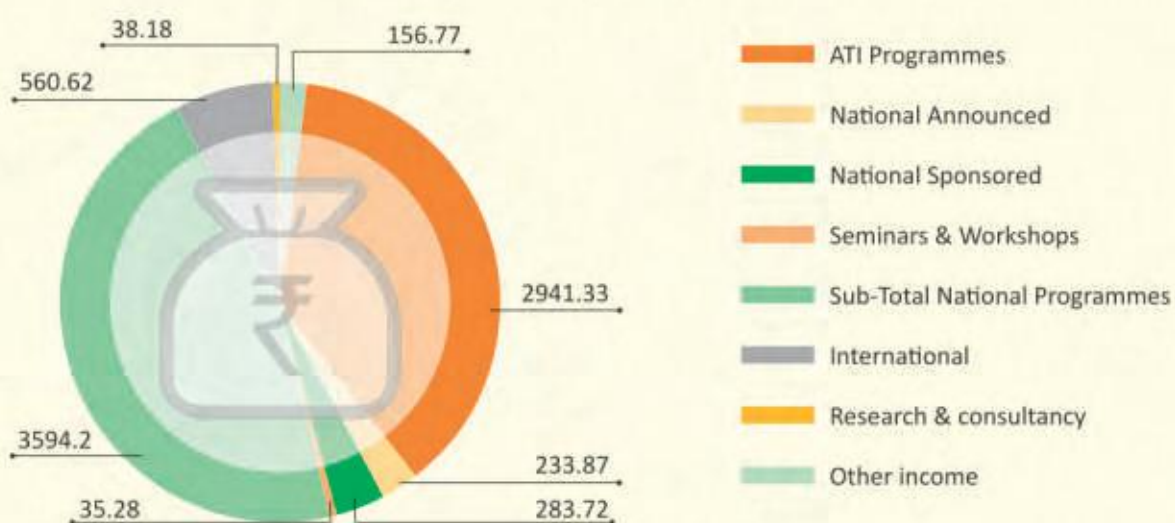
Financial performance

The Institute recorded 26 per cent growth in its income from various activities over the previous year: from Rs. 3,441.66 lakhs in 2012-13 to Rs. 4,349.77 lakhs in 2013-14. This could be attributed to the increase in the number of entrepreneurship and skill development programmes over the previous year.

The surplus generated for the year has relatively increased from Rs. 484.98 lakhs in 2012-13 to Rs. 763.15 lakhs for 2013-14. The income, expenses incurred and surplus generated during the year against each activity are shown in the table below.

Figure 4: Share of income from various programmes

2013-14 Activity Income (Rs. In Lakhs)



2013-14			Activity	2012-13		
Income	Expenses	Surplus		Income	Expenses	Surplus
Rs.	Rs.	Rs.		Rs.	Rs.	Rs.
2941.33	2553.57	387.76	◀ ATI Programmes ▶	2318.53	2252.26	66.27
233.87	120.36	113.51	◀ National Announced ▶	149.54	81.9	67.64
283.72	366.25	17.47	◀ National Sponsored ▶	134.75	63.5	71.25
35.28	9.81	25.47	◀ Seminars and Workshops ▶	85.85	34.62	51.23
3,594.20	3,049.99	544.21	◀ Sub-total National ▶	2,688.67	2,432.28	256.39
560.62	504.15	56.47	◀ International Programmes ▶	645.63	486.81	158.82
38.18	32.48	5.7	◀ Research and Consultancy Projects ▶	28.95	25.07	3.88
156.77	0	156.77	◀ Other Income ▶	78.41	12.52	65.89
4,349.77	3,586.62	763.15	◀ Total ▶	3,441.66	2,956.68	484.98
26%			◀ Growth in % ▶	59%		

Our Clients (2013-14)

1. Ministry of Micro, Small and Medium Enterprises
2. Ministry of External Affairs
3. Ministry of Food Processing Industries
4. Ministry of Housing and Urban Development
5. Ministry of Employment and Training, Director General of Employment and Training
6. Ministry of Finance, Department of Economic Affairs
7. Ministry of MSME, Development Commissioner (MSME)
8. Ministry of Textiles, Development Commissioner (Handicrafts)
9. Ministry of Textiles, Development Commissioner (Handlooms)
10. Ministry of Social Justice, Government of India
11. Ministry of Minorities, Government of India
12. Ministry of Science & Technology, Department of Science & Technology
13. Ministry of Heavy Industry and Public Enterprises, Department of Public Enterprises
14. Ministry of Development of North East Region
15. Ministry of Finance, Security Printings Minting Corporation of India Ltd.
16. Ministry of MSME, Khadi & Village Industries Commission
17. Ministry of MSME, Coir Board
18. National Fish Development Board
19. Geological Survey of India
20. National Backward Caste Finance & Development Corporation
21. National Mineral Development Corporation
22. National Institute of Pharmaceuticals Education and Research (NIPER)
23. National Bank for Agriculture and Rural Development (NABARD)
24. Institute of Company Secretaries of India (ICSI)
25. Department of Rural Development, Government of Andhra Pradesh
26. Department of Women & Child Welfare, Government of Andhra Pradesh
27. Employment Generation & Marketing Mission (EGMM), Government of Andhra Pradesh
28. Department of Industries & Commerce, Government of Andhra Pradesh
29. Rashtriya Madhyamika Siksha Abhiyan (RMSA), Government of Andhra Pradesh
30. Industries Department of Bihar
31. Industries Department of Karnataka
32. Industries Department of Kerala
33. Industries Department of Orissa
34. Industries Department of Madhya Pradesh

35. Industries Department of Maharashtra

36. Industries Department of Sikkim

37. Industries Department of Tamil Nadu

38. Industries Department of Uttar Pradesh

39. Industries Department of West Bengal

40. Maharashtra State Minorities Commission,
Mumbai

41. APITCO, Hyderabad

42. Self-Employment and Training in Twin Cities
of Hyderabad, Government of Andhra
Pradesh

43. Andhra Bank

44. State Bank of India

45. HDFC

46. Oriental Bank of Commerce

47. ICICI Bank

48. Family Health International, Hyderabad

49. Nagarjuna Construction Company Ltd.,
Hyderabad

50. APMAS, Hyderabad

51. Aide et Action, Hyderabad

52. Krishi Vigyan Kendra

53. America India Foundation, New Delhi

54. Apollo Hospital

55. BASIX

56. Sri Ram Corporation

57. Heritage Foods

58. Femi Care Hospital

59. Chetana Society, Hyderabad

60. William J. Clinton Foundation



5. ni-msme Programmes and Activities (2013-14)

Activities of the Institute Union Secretary releases almanac

Mr. Madhav Lal, Secretary to Gol, Ministry of MSME released the Institute's calendar of Executive Development Programmes 2013-14, on 18th April at the Institute campus. Mr. C. K. Mishra, IAS, Jt. Secretary (MSME), Gol and Mr. B. N. Nanda, IES, Economic Adviser, Government of India also graced the occasion. Mr. M. Chandrasekhar Reddy, Director General ni-msme and the faculty, used the opportunity to explain to the Secretary the latest initiatives incorporated in the calendar.



National programmes

ni-msme organised various national programmes under the "Announced" and "Sponsored" categories that benefited various officers, executives and officials from various departments, institutes and other organisations concerned with the promotion and development of MSME sector and its different facets.

Announced programmes

Training Programme on Strategic Approaches for MSME Development

The National Resource Centre for Cluster Development (NRCD) of ni-msme successfully organised a week-long training programme on "Strategic Approaches for MSME Development" between 27th and 31st January 2014, for executives involved in the promotion and development of MSME sector.

The topics covered included MSME Policy & Programmes, Innovation Promotion, Cluster Strategy, Skill Development, Public Private Partnership, Export Marketing, Corporate Social Responsibility and Self-Help Groups. The participants visited Pochampally Handloom Park as part of their study visit.

Capacity Building of Tribal Development Officers in Entrepreneurship

A national programme on "Capacity Building of Tribal Development Officers in Entrepreneurship" was conducted between 5th and 7th August 2013. The participants included eight officials from Andhra Pradesh, Kerala, Maharashtra and Tamil Nadu.

The programme aimed at strengthening capacities of institutional authorities and creating awareness about entrepreneurship in harmony with tribal traits and culture. The training helped these officers, working for socio-economic development of tribals, to effectively promote MSMEs in concert with economic development of those communities.

Sponsored programmes



Induction Programme for Newly Recruited Industrial Promotion Officers from DICs

A two-week Induction Training Programme for Newly Recruited Industrial Promotional Officers of the Government of Andhra Pradesh was conducted between 28th October and 9th November 2013, by SED.

Post-training Support to Business Membership Organisations (BMOs)

ni-msme was entrusted the task of providing post-training services to select Business Membership Organisations by Sequa gGmbH, India under 'Capacity Development of Business Membership Organisations (BMOs) in India'. The project is part of the MSME Umbrella Programme being implemented by GIZ, Office of DC MSME and SIDBI under the Indo-German bilateral cooperation. The objectives of the current assignment are to provide consultancy support to six BMOs, to help prepare an action plan for 12 months and to help implement those activities. The six BMOs include Consortium of Service Providers for Up-gradation of Enterprises (CAPSULE), Hyderabad; Gulbarga Industrial Estate Manufacturers Association (GIEMA), Hyderabad; Nalgonda Drug Manufacturers Association (NDMA), Hyderabad; Uppal Industries Association (UIA), Hyderabad; Cherlapally Industries Association (CIA), Hyderabad and Machilipatnam Imitation Jewelry Park Member's Welfare Association (MIJPMWA), Machilipatnam.

Refresher Training for MSSIDC Officers

On 23rd August 2013, SED organised the valedictory function of the Refresher Programme for MSSIDC Officials on the MSME Sector. The programme was sponsored by MSSIDC, Government of Maharashtra, Mumbai. Twenty four officials attended, of whom nineteen were from MSSIDC, four from DICs and one from MCED.

Training Programmes on Safety for Contract Labour

People working on contract hardly get good opportunities for training. In this context, the Andhra Pradesh Social Welfare Board sponsored "Training Programmes on Safety for Contract Labour" and requested ni-msme to conduct these trainings during 2013-14 at Visakhapatnam. ni-msme's partner organisation, Oriental Skills and Safety Services trained 3,371 Industrial workers and helped them upgrade their skills in the following trades: mason, electrician-bar bending, carpentry, welding, plumbing and sanitary work.

Mid-Career Training for Top and Middle Level Executives of KVIC on Enterprise Excellence

ni-msme organised three national programmes: Mid-Career Training for Top and Middle Level Executives on Enterprise Excellence (29th July to 2nd August 2013).

The programme covered MSME ACT 2006, Motivational Aspects, Time Management, Stress Management, Conflict Management, Eight Habits of Effective People, Transactional Analysis, TQM, ISO Standards, Six Sigma, Problem Solving Tools, Logistics and Supply Chain Management (LSCM), Enterprise Resource Planning (ERP) and CRM.



Customised Training Programme for Canara Bank Executives

Canara Bank sponsored a training programme for their executives. The programme sensitised the employees to the fact that enterprises depend on their employees fulfilling their responsibilities whole-heartedly, in order to grow and flourish. An enterprise's performance can falter due to diverse expectations across the organisation. Therefore, the organisation must gear up to develop and adopt a holistic approach to operations that takes into account all factors affecting it, in order to achieve the enterprise's objectives.



Training Programme on Successful Implementation of Cluster Strategy



ni-msme organised a three-day training programme on "Successful Implementation of Cluster Strategy" between 5th to 7th July 2013, for stakeholders in clusters at Maharashtra. A total number of 24

participants including officials from Maharashtra State Small Scale Industries Corporation and Maharashtra Centre for Entrepreneurship Development and entrepreneurs from various clusters participated.

Training Programme on Counselling and Mentoring for Industrial Promotion Officers

A week-long training programme on "Counselling and Mentoring for Industrial Promotion Officers" was organised from 26th to 30th August 2013 at the ni-msme campus. The programme was sponsored by the Directorate of Micro and Small Scale Enterprises, Government of West Bengal. From eleven districts of West Bengal, 21 Industrial Development Officers participated.

IGNITE - Industrial Motivation Programme

A 21-day residential, motivation programme, "IGNITE Industrial Motivation Camp", was conducted at the Institute campus from 10th to 30th September 2013.

A total of 207 aspiring Scheduled Caste (SC) and Scheduled Tribe (ST) entrepreneurs, including 42 women, selected from various parts of the state attended the programme. Sponsored by Andhra Pradesh Industrial Infrastructure Corporation (APIIC) and Commissioner of Industries, Government of Andhra Pradesh, the programme was jointly conducted by the Dalit Indian Chamber of Commerce and Industry (DICCI), Confederation of Indian Industry (CII) and ni-msme as a knowledge partner.



Balanced Score Card for Executives of Singareni Collieries

A programme on "Balanced Score Card and Related Tools for Productivity Improvements in the Mining Industry" was organised for Executives of Singareni Collieries by SEM between 28th and 30th October 2013. The programme, a second in the series, was sponsored by Singareni Collieries Company Limited. The Director General, ni-msme, distributed certificates to the participants on the completion of the programme.

International Training Programmes

ni-msme has been conducting several International Training Programmes, facilitating value addition to foreign promoters and officials concerned with MSMEs through training, research, consultancy, extension and information services.

ni-msme's activities have extended beyond Indian shores touching almost all the developing economies around the world. ni-msme is the first Indian organisation to bring together participants from abroad for training in various facets of enterprise development. ni-msme has so far trained more than 8,425 professionals from 140 countries since 1967. The Institute's programmes are modified periodically, taking into account the progress and potential of the developing world, which is keen to achieve faster rates of economic growth.

The executive development programmes offered by ni-msme are structured for various professionals in the developing countries, sponsored by the Ministry of External Affairs, Government of India, under Indian Technical and Economic Cooperation (ITEC) / Special Commonwealth Assistance for Africa Programme (SCAAP) / Afro-Asian Rural Development Organisation (AARDO) / Technical Cooperation Scheme of Colombo Plan (TCS Co Plan). These programmes are of 8 and 12 weeks duration, set over four phases.

Some of the programmes offered to the international participants in the past year were:

Exclusive International Programme

A special international programme on "Enterprise Planning and Promotion in Food Processing Sector in the African Region" was held in March 2014. This was sponsored by MEA, Government of India, under India-Africa Forum Summit (IAFS-II) and implemented by the Ministry of Food Processing Industries, (MoFPI), Government of India.

International Programme for Palli Karma - Sahayak Foundation (PKSF) Executives, Bangladesh

SED organised an International Programme on "Micro-finance for Micro-Enterprise Development and Livelihood Promotion" between 15th and 20th Apr 2013 for 10 officials of Palli Karma - Sahayak Foundation (PKSF), Bangladesh. These officials were informed about best practices adopted by micro-finance institutions in India and women empowerment through policy support and initiatives of SHGs. After two days of interaction at the Institute, they visited leading micro-finance institutions at Jaipur, Ajmer, Agra, Shikohabad and New Delhi and interacted with the officials.



Valediction of International Training Programmes

In all, seven International Executive Development Programmes were concluded during the valedictory function. Out of these, three programmes continued from Phase-I, while the rest were from Phase-II. The Phase-I programmes were of 12 weeks duration (5th August to 25th October 2013), whereas those of Phase-II were of eight weeks duration (2nd September to 25th October 2013). In all, 115 delegates from 33 countries, mainly from Africa and Asia, benefited by understanding the Indian MSME experience through these two sets of programmes.

Phase-III international Executive Development Training Programmes

The Phase-III International Executive Development Training Programmes at ni-msme, for the training year 2013-14, was inaugurated on 16th November 2013. This phase comprised of a set of six programmes, each of eight weeks duration (16th November 2013 to 3rd January 2014).

The six programmes in this set were:

- i. Empowerment of Women through Enterprises (EWE)
- ii. Innovative Strategies for SME Development (ISSD)
- iii. Training Methods and Skills for Managers (TMSM)
- iv. SME Financing - Approaches and Strategies (SMEFAS)

- v. Global Trade and Business Imperative for SMEs (GT & BIS) and
- vi. Total Quality Management & ISO 9001: 2008, 14001: 2004, BS 7799 & Six Sigma (TQM)

In all, 126 executives from 31 countries of Asia and Africa attended programmes of this phase.

Inauguration of the Fourth Phase of the Institute's International Executive Development Programmes

This phase had six programmes, sponsored by the MEA, all of eight weeks duration (20th January to 14th March 2014). In all, 137 delegates from 47 countries attended. One of the programmes, which had been designed considering the world-wide importance of cluster strategy, was introduced only during this phase.

The six Programmes were:

- i) "Tourism and Hospitality Management (THM)
- ii) Training of Trainers in Entrepreneurship and Skill Development (ToT-ESD)
- iii) Intellectual Property Rights (IPRs) and Implications for SMEs (IPRIS)
- iv) Planning and Promotion of Agro and Food Enterprises (PAFE)
- v) Inclusive Growth of SME through Cluster Strategy (IGCS)
- vi) Promotion of Micro Enterprises (POME)



Workshops and Seminars

International Workshop on Natural Dyes

A three-day international workshop on natural dyes was organised jointly by the Acharya N.G. Ranga Agricultural University (ANGRAU), the National Agricultural Innovation Project and ni-msme between 5th and 7th March 2014. In all, about 350 delegates from various streams associated with natural dyes, attended the workshop.

The workshop stressed the importance of wider adoption of natural dyes to avoid pollution and to scale up research. It also highlighted concepts of branding, development of standards and acceptable quality parameters for natural dyes that are available world-wide. The workshop also dwelt upon other issues concerning natural dyes such as availability and methods of application. It stressed the importance of understanding the chemistry of natural dyes and analysis of pigments, in order to get good results.



ISO 9001:2008/14001/22000/27000 & IPR Workshop

SEM conducted a one-day workshop on ISO 9001:2008/14001/22000/27000 & IPR on 18th April 2013. Executives from software companies and PSUs, NGO representatives, management students, post-graduate engineering students of Jawaharlal Nehru Technological University (JNTU) and Osmania University (OU), Chaitanya Bharati Institute of Technology (CBIT), lecturers, Research & Development (R&D) scientists, and in all, 55 engineers and doctors attended the workshop.

Fifth IPFC Steering Committee Meeting

Dr. Rajat Kumar, IAS, Commissioner of Industry, Commerce & Export Promotion, Government of Andhra Pradesh voiced the need for the Centre to focus on untapped Geographical Indications (GIs) in the state for registrations. He extended support for developing the same at each district in association with the General Manager (GM) of District Industries Centre (DIC) officials.

Lean Process for MSMEs

A one-day seminar on Lean Manufacturing Practices was organised in the campus on 11th May 2013 by SEM of

ni-msme. The sponsors to the event were Central Bank of India and Bank of Maharashtra, Mumbai. The themes of the seminar included: Lean Timeline, core principles of Lean Manufacturing, Lean Sigma, Six-Sigma, Benchmarking and Business Process Reengineering (BPR).

Air Pollution Control, Monitoring, Issues & Solutions for SME Sector



A two day workshop was held on "Air Pollution Control, Monitoring, Issues & Solutions for SME Sector" from 5th to 6th September 2013. The workshop was sponsored by Andhra Pradesh State Council of Science & Technology (APCOST), Department of Environment, Forests, Science & Technology, Government of Andhra Pradesh.

Workshop on Obtaining and Managing Finance

A one-day workshop on “Obtaining and Managing Finance” sponsored by the State Bank of Hyderabad, was organised by SEM on 26th October 2013. The workshop objective was to train prospective and existing micro and small entrepreneurs, make them financially-literate and educate them on the requirements of lenders requirements, including proper book keeping practices, credit bureau reports, corporate governance and risk management practices.

Two-day National Conference on Stress Management



A two-day national conference “Stress Management Professional-2013” was organised jointly by International Stress Management Association (ISMA), ni-msme and Stress Management Lab (SML) on 8th and 9th November 2013 at ni-msme.

National Stress Management Awards instituted by ISMA were awarded at this event.

Workshop for Industrial Training Institutes (ITIs)

SED organised a series of Directorate General of Employment and Training (DGET) Orientation Workshops on Scheme Upgradation of 1,396 ITIs through PPP at various districts of Tamil Nadu and Pondicherry. The three workshops, part of this series, were conducted between 18th and 21st March 2014 at Madurai, Chennai, Thiruchirapalli and Coimbatore.

One-day State Level Conference on “Revitalising SMEs”

A one-day, state-level conference on “Revitalising SMEs” was organised by Hans India at Hotel Marriott in Hyderabad on 15th July 2013. The conference deliberated on issues such as Revitalising SMEs, Finance and Credit Flows, Entrepreneurship, Skill Development and Technology Up-gradation and Productivity. Dr. C. Rani, Director (SEE) chaired the session on Entrepreneurship, Productivity, Skill Development and Technology up-gradation. Experts presented papers in this session.

Mr. M. Chandrasekhar Reddy, Director General, ni-msme, attended as a jury member to scrutinise and help finalise winners of SME Excellence awards, given to entrepreneurs in different categories.

IT in Manufacturing Summit - 2013 at Chennai

Prof. Dibyendu Choudhury, Faculty Member (SEM) was Guest Speaker at the “IT in Manufacturing Summit-2013”, organised by Anna University and Nispana between 18th and 19th April 2013 at The Raintree Hotel, Teynampet, Chennai. The summit was attended by representatives and executives from IT organisations. He explained the importance of the MSME sector and focused on the vital role of IT and its future perspectives, considering the MSME sector. He also elaborated on agile, cost effective solutions such as cloud computing for MSMEs and its role in cutting down expenditure.

Workshop on Productivity Improvement

The Kerala Bureau of Industrial Promotion (K-BIP) organised a one-day workshop on Productivity Improvement at Grand Hotel, Cochin, Kerala on 18th February 2014. The workshop was attended by 159 delegates including entrepreneurs, board members of industry associations, bankers, university heads, lecturers, research scholars of management departments. K-BIP invited Dr. N. Srilakshmi, Registrar and Prof. Dibyendu Choudhry, FM (SEM) of ni-msme to expound on some specialised topics.

Research & Consultancy

Diagnostic Study of Coir Clusters

The Coir Board assigned ten coir clusters in the states of Kerala, Tamil Nadu and Andhra Pradesh to **ni-msme** to conduct diagnostic studies. The Coir Board planned to implement the SFURTI project in the Twelfth Five-Year plan for holistic development of coir industries.

Prof. K. Surya Prakash Goud, AFM, NRCDC visited the Coir Board between 8th and 12th July 2013 for discussions on the project and to understand the cluster scenario. He participated in the meeting chaired by Prof. G. Balachandran, Chairman, Coir Board and also discussed with Mr. M. Kumara Raja, Secretary, Coir Board, Mrs Anita Jacob, Joint Director, Mr. V. Babu, Deputy Director (SFURTI), Regional Officers of Tamil Nadu and Andhra Pradesh and officials of Central Coir Research Centre regarding the clusters allocated to **ni-msme** for the study. An Evaluation Study of Export Promotion Scheme (Training Programmes on Packaging for Exports) sponsored by Development Commissioner (DC), MSME, New Delhi was conducted and the report submitted in the month of June 2013.

The ten diagnostic studies and reports of SFURTI Coir Clusters were submitted to the sponsoring organisation, Coir Board, Kochi in the month of October 2013.

Corporate Social Responsibility (CSR) Evaluation for ECIL

SEM conducted a study to assess the impact of CSR activities done by ECIL in different government schools of Ranga Reddy district of Andhra Pradesh. The study was conducted at twelve government schools assigned by ECIL. The study assessed the satisfaction of the school management with the service delivery under ECIL's CSR activities. The views of the principals, students, teachers, community members were considered and documented. The SEM team had detailed interactions with the community, the MLA and Corporator of the project areas and observed that they held ECIL in high esteem.

Consulting - Capacity Development of BMOs for Sequa India

ni-msme provided consulting services for six Business

Membership Organisations (BMOs) sponsored by Sequa India under the project 'Capacity Development of BMOs in India' (Part of the MSME Umbrella Programme of GIZ).

Study of Pochampally Handloom Park

ni-msme carried out a study to identify suitable measures for effective utilisation of available infrastructure and also support many from the weaver community. The study team of **ni-msme** took efforts to identify critical bottlenecks by organising a series of interactions with various stakeholders such as SPV members, weavers, financial institutions, employees of the Park, project management consultants, state government officials, officials of DC (Handlooms), raw material suppliers, marketing executives and people at some of the handloom units located in and around Pochampally. Based on the findings, a report was submitted. A presentation on the findings was made on 20th February 2014 at the Office of DC for Handlooms.

Other Initiatives

Memorandums of Understanding (MoUs) signed during the year 2013-14

- Government of Maharashtra
- OSSS
- BASIX
- Rao's IAS Academy

Publications

1. Success Stories of ATI Scheme
2. Emerging Trends in Service Sector
3. Documentation on "Best Practices for Cluster Strategies in Micro Enterprise Development" for Ministry of Housing and Urban Poverty Alleviation (HUPA)
4. Publication on Traditional Paintings:
Documentation of Ganjifa Painting
Documentation of Chittara Folk Art of Karnataka
5. Golden Nuggets

Programmes under the scheme for Assistance to Training Institutions (2013-14)

Apex Institution and Scheme of Assistance to Training Institutions

The Ministry of Micro, Small and Medium Enterprises promotes the development of micro and small enterprises in the country with the objective of creating self-employment opportunities and upgrading relevant skills of current and potential entrepreneurs. In order to promote new entrepreneurs and the establishment of new enterprises, the Ministry has been implementing various schemes and programmes.

Under such schemes, the Ministry launched the "Assistance to Training Institutions", during the last quarter of 2009-10 to ensure that young entrepreneurs are encouraged and equipped to take up new ventures. This was to be achieved by imparting entrepreneurship and skill development training through three national-level Entrepreneurship Development Institutes.



The ni-msme, one of the three national level Entrepreneurship Development Institutes, has played a major role as 'Apex Institution' of the Ministry, in the implementation of this scheme.

Programmes and Beneficiaries of ni-msme Partner Institutes

The Ministry approved and allotted 1,062 programmes, against which 256 programmes were actually conducted through Partner Institutions covering 7,310 beneficiaries, and 789 programmes covering 23,600 beneficiaries were conducted by the Institute (ni-msme) itself. As against the total financial assistance involved of Rs. 2,941.33 lakhs, the Ministry released assistance of Rs. 2,660.68 lakhs and the balance of Rs. 280.65 lakhs was due to be released on 31st March, 2014.

ni-msme Programmes and Beneficiaries

The number of programmes conducted by ni-msme, the participants trained and the number of trainees who achieved self-employment or managed to find wage employment, since 2009-10 to 2013-14, are listed in the following table.

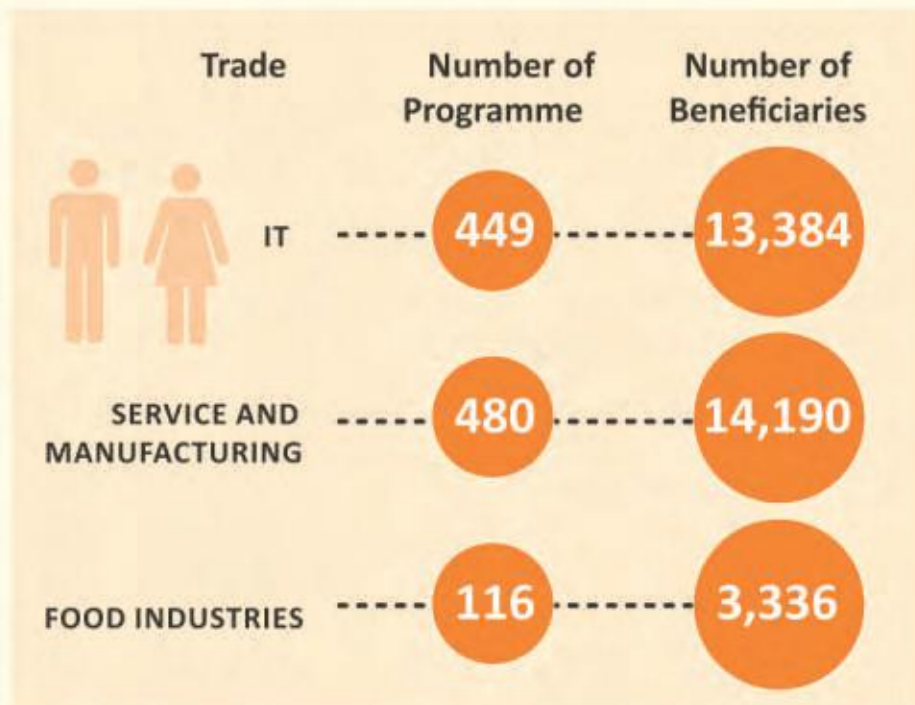
Programmes (in numbers)	Trainees (in numbers)	Year	Achievement (success rate)				Overall %
			Wage employed		Self-employed		
			No.	%	No.	%	
07	17	◀ 2009-10 ▶	–	–	–	–	–
411	011,166	◀ 2010-11 ▶	3,041	27.23	2,619	23.46	50.68
536	15,390	◀ 2011-12 ▶	3,219	21.00	3,091	20.00	41.00
972	28,443	◀ 2012-13 ▶	7,394	26.00	5,398	19.00	45.00
1,045	30,910	◀ 2013-14 ▶	8,111	26.24	8,781	28.41	54.65
2,971	86,079	◀ Total ▶	21,765	25.00	19,889	23.00	48.00

Success rate of beneficiaries from 2009-10 to 2013-14



Tradewise beneficiaries

The number of programmes conducted by ni-msme and the number of beneficiaries, categorised by the various trades for which these programmes were conducted, for the period (2013 to 2014) are listed below.



Visits

The Director General's visits

Mr. M. Chandrasekhar Reddy, Director General, ni-msme was the Guest of Honour at the "Buyers-Sellers Meet" organised on 4th October 2013 by NSIC, at the Surana Udyog Auditorium, Federation of Andhra Pradesh Chambers of Commerce and Industry (FAPCCI) Federation House, Hyderabad. He enlightened the audience on liaison work of services and products of buyers and sellers and the role of ni-msme in facilitating such meets.

The Director General attended the inauguration of a Food-waste Portable Bio-Gas Plant by Er Y. Nagesh Kumar, Member Secretary, Andhra Pradesh Council of Science & Technology (APCOST), Hyderabad, on 10th October 2013, at the premises of the State Home, Women Development and Child Welfare (WD&CW) Department, Government of Andhra Pradesh.

The Director General, ni-msme attended the Third Convocation - 2013 of NIPER held at their campus on 19th October 2013.

National Handloom Development Corporation (NHDC) conducted a business review meeting on 25th October 2013 for the Regional Managers and various Departmental Heads. Various issues related to challenges and opportunities before the handloom sector were discussed. Prof. K. Suryaprakash Goud, AFM participated in the meeting and shared some experiences of ni-msme in cluster development, especially rural clusters. He also highlighted interventions in Barabanki and Mubarakpur handloom clusters under Integrated Handloom Cluster Development Project (IHCDP). An outcome was for ni-msme to work closely with NHDC and help with marketing interventions with a focus on exports.

Visits by Dignitaries

Throughout the year ni-msme has been visited by various key dignitaries, the details of some visits are given below

- Dr. Cecep Effendi, Director General, Centre on Integrated Rural Development for Asia and the Pacific

(CIRDAP) and Dr. Vasanthi Rajendran, Director, CIRDAP visited ni-msme on 4th May to identify areas of training and research and joint collaboration consulting.

- The Joint Secretary, Gol, Ministry of Commerce & Industry visited ni-msme

ni-msme explored the possibility of associating for joint initiatives in the areas of soft interventions in human resource development, building capacities of enterprises to become competitive, protecting IPR and cost and profit analysis.



- Mr. Surendra Nath Tripathi, IAS, Joint Secretary (SME) to Gol chaired the meeting organised with the Directors, faculty and consultants on 19th November 2013. The Joint Secretary made several suggestions including the setting up of MSME University. In this connection, he asked the gathering to explore the websites of Kent University, Singapore University, Japanese University and a couple of other top universities to study their educational models for deciding the one most suitable for the proposed MSME University. He also suggested that the proposed University model should be confined to the manufacturing sector, focusing on ten important segments.

Visit by M.Sc. (Agriculture) students

A batch of 25 M.Sc. (Agriculture) students visited ni-msme, as part of their study. An interactive session was arranged with the ni-msme faculty wherein the need of EDPs and Entrepreneurial Skill Development Programmes (ESDPs), the importance of skill development and the role of ni-msme in MSME development was explained.

Events

Various events were organised throughout the year at the **ni-msme** campus for the benefit of employees, programme participants and residents of the campus. These events helped foster the bond between the Institute, the society, employees, their families and the resident programme participants, while creating awareness about various facets of social and cultural aspects of life in India and of the countries that the participants hailed from. These events also served as a relaxing break for the participants who were away from their homes and families.

Union Secretary felicitates ni-msme employees



The football ground was prepared in a week. After the inauguration of the football ground by the Union Secretary, the contributions of Mr. K. Krishna Mohan, Sports In-charge, Mr. B. Gopaldaswamy, Superintendent (Caretaking) and Mr. K. Bikshapathi (Multi Task Attender) were recognised and they were felicitated by Mr. Madhav Lal, IAS, Secretary to Gol, Ministry of MSME.

World Environment Day Celebrations - 2013

APIIC, in technical support with German International Cooperation (GIZ), launched a month-long “Industrial Environmental Improvement Drive (APIIC-IEID)” in 75 selected Industrial Parks (IPs) and SEZs all over Andhra Pradesh, as part of World Environment Day Celebrations - 2013, from 5th June to 5th July 2013. It aimed to raise awareness on different aspects of environmental protection, to remove unauthorised waste dumps in the industrial parks, to clean storm water drains and to take up plantation in the selected IPs. Every selected IP organised interactive sessions, cleanliness drives,

plantations and displayed relevant posters and banners during the APIIC-IEID.

APIIC invited Prof. J. Koteswara Rao, Associate Faculty Member (SED), **ni-msme**, to participate in interactive sessions held at different venues. The first one was held at the KNMIASS Office for two industrial estates of the Moulali zone (Moulali and Kushaiguda) on 3rd July 2013, while the second was held at the APIIC Pharma SEZ, Polepally village, Jedcherla, Mahabubnagar district on 4th July 2013. The next session was held at the premises of Hetero Drugs, located at Green Industrial Park (GIP), Jedcherla, Mahabubnagar on 2nd August 2013. Around 75 entrepreneurs attended the sessions at every venue.

ni-msme at Mela

ni-msme set up a stall at the Bruhat Udyoga Mela at Kolar Karnataka. The mela was organised with the intention of creating opportunities of self-employment or wage employment for the district's unemployed youth. Over 150 large companies including PSUs took part. **ni-msme** through its presence highlighted benefits of entrepreneurship and the Institute's Entrepreneurship Development Programme (EDP) training programmes, which could develop their confidence and capabilities. About 600 youth expressed their eagerness to go through the training.

IT Job Mela at ni-msme

An IT Job Mela was organised by **ni-msme** on 9th July 2013, where Balendin Software Solutions, Brent Technologies and Genesis Consulting Services participated. The trainees of **ni-msme**'s ESDPs attended the Mela for better employment opportunities. The Ministry assigned the job of organising ESDPs to **ni-msme** — as it was a pioneer in organising EDPs and it had been conducting them since the past four years.

Micro Mall

A micro-mall was set up in the **ni-msme** campus on 29th July 2013 for the benefit of the participants and the staff staying in the quarters.

The Sixty-Seventh Independence Day Celebrations

The 67th Independence Day was celebrated at **ni-msme**

on 15th August 2013 with pageantry and cheer. The employees, executives from 20 countries, who were attending the Phase I international programmes, and executives from Maharashtra Small Scale Industries Development Corporation (MSSIDC), who were attending a Refresher Programme on MSME sector, participated in the ceremony.

Book Exhibitions

SEDOC of SEIC organised book exhibitions on three occasions, between 20th and 21st September 2013, 29th and 30th November 2013 and 7th to 8th February 2014 at the campus for the benefit of international participants. Leading local book sellers exhibited books on the subjects related to the training programmes.

Observing Hindi Diwas

ni-msme organised Hindi Diwas on 13th September 2013.

Vijayadasami Celebrations

The ni-msme Employees Union organises the Vijayadasami festival and lunch every year for the benefit of all ni-msme employees.

Diwali Festival

ni-msme celebrated Diwali on 3rd November 2013. The employees and programme participants celebrated the Festival of Lights and distributed sweets

International Mother Language Day

The international participants of the Phase-IV Programme took an imaginative and off the track initiative on the 21st of February 2014, led by Mr. Md. Shahadat Hossain Kabir of Bangladesh. Participants of the international programme on Tourism and Hospitality Management organised International Mother Language Day in the campus all by themselves without seeking any assistance.



International Women's Day

International Women's Day was organised by the Women's Study Cell of SEE at ni-msme on 12th March 2014. The theme was "Women Empowerment - Inspiring Change". It was sponsored by Andhra bank. Dr. C. Rani, Director (SEE) & CAO coordinated the event.

Sadbhavana Diwas

ni-msme observed "Sadbhavana Diwas" on 20th Aug 2013 to promote national integration and communal harmony among people of all religions, languages and regions.

Vigilance Awareness Week

In compliance with the orders of the Central Vigilance Commissioner, Gol, New Delhi, ni-msme observed a "Vigilance Awareness Week" from 28th October to 2nd November 2013 to convey that corruption is anti-national and against economic development.



Quami Ekta Week

ni-msme observed Quami Ekta Week (National Integration Week) from 19th to 25th November 2013. to foster and reinforce the spirit of communal harmony, national integration and pride in our vibrant, composite culture and nationhood.



Golden Jubilee Celebrations of ni-msme



On 21st December 2013, ni-msme celebrated its Golden Jubilee with great joy and fanfare. The entire campus was decked and showed its best profile on the grand occasion of the Golden Jubilee celebrations. All members of the ni-msme family; past and present, turned out in their best. Representatives of ni-msme's partner institutions and its apex partners were also present.

Many ministers and dignitaries of the Central and State governments graced the event and conveyed their best wishes and words of appreciation.

The crowning moment was the release of three books published by ni-msme, at the hands of the honourable ministers.

To coincide with the gala event and to prominently display the outcome of the Institute's services, an exhibition of products made by the entrepreneurs trained in the EDPs and ESDPs of the partner institutions and apex partners, was organised. The dignitaries and other members visited the stalls, numbering over a hundred. The ministers interacted with the entrepreneurs and appreciated the wares on display.

The former members of the Institute were felicitated with mementos.

The breath-catching celebration came to a close with an amazing cultural show in the evening. Over 2,400 people, including representatives of the press and the electronic media channels, attended. The news channels and papers covered the event prominently.

Secretary (MSME), GoI interacting with Students of Live Projects



6. Annexures

Annexure I National Programmes

Sl.No.	Name of Programme	DURATION		Trainees
		From	To	
1	Faculty Development Programme on MSME Activities, Funding & Competency Building	24.04.13	26.04.13	7
2	Balanced Score Card Designing for the Executives of Singareni Collieries	06.05.13	10.05.13	17
3	Prog. for Canara Bank Executives Heading SME Sulabhs	27.05.13	31.05.13	19
4	Prog. for Canara Bank Executives Heading SME Sulabhs	03.06.13	07.06.13	17
5	Enterprise Excellence through TQM for DPE, Karnataka	18.06.13	22.06.13	21
6	Soft and Hard Interventions in MSME Clusters	17.06.13	21.06.13	10
7	Executive Development for Supervisors of NMDC	24.06.13	06.07.13	26
8	Counselling and Mentoring for IPOs of Government of W.B.	26.08.13	30.08.13	21
9	Successful Implementation. of Cluster Strategy for Stakeholders of Maharashtra Clusters	05.07.13	07.07.13	24
10	Executive Development for Supervisors of NMDC	08.07.13	20.07.13	21
11	SPMCIL Developing Skill & Talent of MSME Employees	11.07.13	12.07.13	61
12	Advanced Skills for Executive Secretaries and Change Management	22.07.13	24.07.13	17
13	Training on Implementation of National Mission on Food Processing	22.07.13	24.07.13	11
14	Cluster Development for Officers of Industries Dept. Government of Uttar Pradesh	22.07.13	26.07.13	11
15	Environmental Impact Assessment (EIA) Process & Procedures	29.07.13	31.07.13	24
16	Mid-career Training for Top and Middle Level Executives on Entr. Excellence	29.07.13	02.08.13	12
17	Capacity Building of Tribal Development Officers in Entrepreneurship	05.08.13	07.08.13	8
18	Training 4 Sales Personnel, Acct. and Managers of Deptl. Sales outlets of KVIC	05.08.13	09.08.13	17
19	Patent Filing System & IPR Policy in India	12.08.13	14.08.13	6

Sl.No.	Name of Programme	DURATION		Trainees
		From	To	
20	Refs. Prog MSSIDC officials on MSME Sector (MSSIDC, Government of Maharashtra)	12.08.13	23.08.13	24
21	RTI Act and Significance	26.08.13	28.08.13	14
22	Finance for Non-Finance Executives	02.09.13	04.09.13	14
23	ToT in Entrepreneurship Development for Programme Coordinators of KVK	16.09.13	20.09.13	17
24	Induction Training for Indus Extension Officers on MSME Promotion (Kerala)	30.09.13	06.12.13	30
25	Exposure to Accounts for Assistant Managers (Operations) of APBCL	15.10.13	26.10.13	37
26	Promotional and Branding Strategies for Entrepreneurial Organisations	21.10.13	25.10.13	13
27	Business Development Plan for MSE	28.10.13	01.11.13	6
28	Product Identification & Promotion of Low Investment Project Profiles	04.11.13	08.11.13	5
29	ToT in Entr.ship Devl. for the officials of Agri. & Allied Dept. NE Region	18.11.13	22.11.13	8
30	Promotional and Branding Strategies for Entrepreneurial Organisations	16.12.13	20.12.13	17
31	Awareness Programme on ISO 9001:2008 Certification Process	18.12.13	19.12.13	3
32	Inclusive Growth of MSMEs through PPP	26.12.13	28.12.13	24
33	Development of Rural Clusters	06.01.14	10.01.14	2
34	Project Appraisal: Tools and Techniques	06.01.14	10.01.14	3
35	Development of Master Trainers of Commodity Boards in Entrepreneurship	20.01.14	24.01.14	10
36	Strategic Approaches for MSME Development	27.01.14	31.01.14	14
37	Revitalisation of DICs for GM/FMs	24.02.14	28.02.14	17
38	Product Identification & Preparation of Low Investment Project Profiles	03.03.14	07.03.14	18
39	Mid-career Programme on MSME Promotion (for Kerala)	03.03.14	07.03.14	28
40	Outreach Programme on Food Processing sponsored by National Institute of Food Technology Entrepreneurship and Management (NIFTEM)	28.08.13		419
41	Skill Development Training on food processing (NIFTEM)	07.03.14	2.03.14	54

Sl.No.	Name of Programme	DURATION		Trainees
		From	To	
42	Skill Development Training on food processing (NIFTEM)	19.03.14	29.03.14	53
43	Skill Development Training on food processing (NIFTEM)	21.03.14	31.03.14	50
44	Skill Development Training on food processing (NIFTEM)	21.03.14	26.03.14	50
45	Skill Development Training on food processing (NIFTEM)	22.03.14	27.03.14	50
46	Skill Development Training on food processing (NIFTEM)	24.03.14	28.03.14	60
47	EDP for NTPC officials	18.03.14	29.03.14	22
48	Induction training programme for Environmental Engineers of APIIC	24.03.14	29.03.14	6
49	Non-conventional Energy for Reducing Poll. & Conservation in MSMEs (CDC)	27.03.14		20
50	Standards & Benchmarking for MSMEs in India from IPR Perspective (CDC)	27.03.14		30
51	Mini Project (ECE)	17.06.13	16.07.13	291
52	Mini Project (EEE)	17.06.13	16.07.13	28
53	Mini Project (CSE)	17.06.13	16.07.13	62
54	Mini Project (IT)	17.06.13	16.07.13	3
55	Oracle	09.12.13	08.02.14	10
56	Live Projects in CSE	20.01.14	31.03.14	136
57	Live Projects in ECE	20.01.14	31.03.14	202
58	Live Projects in EEE	20.01.14	31.03.14	309
59	Live Projects in IT	20.01.14	31.03.14	24
60	Mini Project for B.Tech (CSE)	24.06.13	31.07.13	143
61	Mini Project for B.Tech (IT)	24.06.13	31.07.13	38
62	Mini Project for B.Tech (ECE)	24.06.13	31.07.13	227
63	Mini Project for B.Tech (EEE)	24.06.13	31.07.13	25
64	Certificate Course in Java	09.12.13	01.02.14	10
65	Certificate Course in Dot Net	09.12.13	01.02.14	10
66	Live Projects in CSE	20.01.14	31.03.14	208
67	Live Projects in ECE	20.01.14	31.03.14	169
68	Live Projects in EEE	20.01.14	31.03.14	76

Sl.No.	Name of Programme	DURATION		Trainees
		From	To	
69	Live Projects in IT	20.01.14	31.03.14	100
70	Diploma Project for ITI students	12.06.13	12.12.13	88
71	Diploma in Industrial Training	Jan	June	58
72	Training of Secretarial Staff of BMOs on Soft Skills	10.05.13		6
73	FDP at Bhubaneswar (DST)	10.06.13	22.06.13	28
74	Faculty Development Prog. (DST)	08.07.13	20.07.13	29
75	FDP (DST) at Durg, Chattisgarh	05.08.13	17.08.13	25
76	Air Pollution Control and Monitoring Issues & Solutions for SME Sector	05.09.13	06.09.13	130
77	Entrepreneurship Dev. Prog. for prospective SC/ST Entrepreneurs	10.09.13	30.09.13	42
78	Entrepreneurship Dev. Prog. for prospective SC/ST Entrepreneurs	10.09.13	30.09.13	42
79	Entrepreneurship Dev. Prog. for prospective SC/ST Entrepreneurs	10.09.13	30.09.13	42
80	Entrepreneurship Dev. Prog. for prospective SC/ST Entrepreneurs	10.09.13	30.09.13	41
81	Entrepreneurship Dev. Prog. for prospective SC/ST Entrepreneurs	10.09.13	30.09.13	40
82	Induction Training for IPOs on MSME Dev. of Industries Dept., A.P.	28.10.13	09.11.13	29
83	Induction Training for IPOs on MSME Dev. of Industries Dept., A.P.	28.10.13	09.11.13	27
84	Induction Training for IPOs on MSME Dev. of Industries Dept., A.P.	28.10.13	09.11.13	27
85	Balanced Scorecard & Rel. Tools for Prod. Impr. in Min. Indus. (Singareni Coll)	28.10.13	30.10.13	18
86	Faculty Development Prog. (DST)	30.12.13	11.01.14	30
87	Faculty Development Prog. (DST)	20.01.14	01.02.14	28
88	Faculty Development Prog. (DST)	27.01.14	08.02.14	25
89	Technology Entrepreneurship Dev. Prog. (DST)	03.02.14	15.03.14	26
90	Women Entrepreneurship Dev. Prog. (DST)	03.02.14	15.03.14	26
91	Women Entrepreneurship Dev. Prog. (DST)	03.02.14	15.03.14	27

Sl.No.	Name of Programme	DURATION		Trainees
		From	To	
92	Women Entrepreneurship Dev. Prog. (DST)	03.02.14	15.03.14	25
93	EDP in Food Processing (AP Food Processing Society)	03.02.14	15.03.14	30
94	EDP in Food Processing (AP Food Processing Society)	10.02.14	2.03.14	30
95	EDP in Food Processing (AP Food Processing Society)	01.03.14	31.03.14	34
96	EDP in Food Processing (AP Food Processing Society)	17.02.14	29.03.14	32
97	EDP in Food Processing (AP Food Processing Society)	17.02.14	31.03.14	33
98	Technology Entrepreneurship Dev. Prog. (DST)	17.02.14	29.03.14	30
99	Faculty Development Prog. (DST)	03.03.14	15.03.14	31
100	Faculty Development Prog. (DST)	07.02.14	18.02.14	29
101	Faculty Development Prog. (DST)	05.02.14	18.02.14	31
102	Medical/Engineering Entrance Coaching Programmes: PMT (Medical)	05.01.14	04.05.14	150
103	PMT (Engineering)	05.01.14	04.05.14	150
104	Ed-CET 2014	05.01.14	04.05.14	100
105-219	Skill Development programmes for HPCL, Vizag (4 Batches)	04.02.14	28.03.14	3,371
	Total			8,449

Annexure II

International Programmes

Sl.No.	Name of Programme	DURATION		Trainees
		From	To	
1	Micro Finance for Micro Enterprises Development and Livelihood Promotion (sponsored by Palli Karma Shahayak Foundation (PKSF), Bangladesh	14.04.13	21.04.13	10
2	Communication Skills in English and Promotion of MSMEs	05.08.13	25.10.13	14
3	Commu Skills in Eng. and Infor. & Commu Tech. for Business Promo of SMEs	05.08.13	25.10.13	4
4	Communication Skills in English and Tourism and Hospitality Management	05.08.13	25.10.13	32
5	Capacity Building for providing Alternative Livelihood Opportunities for the Poor	02.09.13	25.10.13	19
6	Promotion of Entrepreneurship through Transfer of Technology	02.09.13	25.10.13	6
7	Management Consultancy Services for SMEs	02.09.13	25.10.13	12
8	Enterprise Development through Micro Finance for Micro Enterprises	02.09.13	25.10.13	21
9	Reg Perspective of Devl. & Devl'ed. Countries Coop. for SMEs Compt, Mark & Partnership (TCS sponsored)	11.11.13	22.11.13	9
10	Empowerment of Women through Enterprises	11.11.13	03.01.14	23
11	Innovative Strategies for SME Development and Livelihood Promotion	11.11.13	03.01.14	26
12	Training Methods & Skills for Managers	11.11.13	03.01.14	21
13	SME - Financing: Approaches and Strategies	11.11.13	03.01.14	21
14	Global Trade & Business Imperative for SMEs	11.11.13	03.01.14	17
15	Total Quality Management & ISO 9001:2008/14001:2004/BS 7799 & Six Sigma	11.11.13	03.01.14	18
16	Planning & Promotion of Agro and Food Enterprises	20.01.14	14.03.14	28
17	Promotion of Micro Enterprises	20.01.14	14.03.14	15
18	ToT in Entrepreneurship and Skill Development	20.01.14	14.03.14	27
19	IPRs and Implications for SMEs	20.01.14	14.03.14	26
20	Tourism and Hospitality Management	20.01.14	14.03.14	31
21	Inclusive Growth of SME through Cluster Strategy	20.01.14	14.03.14	11
22	ToT on ED for Women Trainers - Motivators TCS)	24.02.14	14.03.14	9
23	Enterprise Planning & Promotion in Food Processing Sector in South Africa (IAFS)	17.03.14	27.03.14	29
	Total			429

Annexure III

Seminars and Workshops

Sl.No.	Name of Programme	DURATION		Trainees
		From	To	
1	Regional level Workshop for Handicrafts	16.04.13	17.04.13	100
2	Project Orientation and Career Counselling for Self-employment	18.04.13		35
3	ISO 9001:2008/14001/22000/27000 Certification & IPR	18.04.13		38
4	Review & Follow-up Meet with Orgns. working for APEX prog.	18.04.13		100
5	Demo of Live Projects of B.T. Students	18.04.13		30
6	Capacity Building of BMOs	18.04.13		8
7	Lean Manufacturing Practices	11.05.13		13
8	Leapfrogging thro Troubled Waters: Inno. Strategy & Busi. Plan (ITRED, Orissa)	15.05.13		81
9	Facilitating Technology Acquisition (in joint with FMC)	28.06.13		130
10	Business Innovations	27.06.13		60
11	E-Marketing for SME Entrepreneurs	19.08.13		78
12	Implementation of the National Mission on Food Proc (NMFP) & MoFPI Schemes	07.10.13	09.10.13	22
13	Obtaining and Managing Finance	26.10.13		38
14	Orientation Workshop on Skills and Livelihood Development (UPA)	28.11.13		72
15	Promotion of Micro Enterprises for Urban Poor through Micro Enterprise	13.12.13		60
16	National Workshop on Prime Minister's Employment Generation Programme (PMEGP)	30.12.13	31.12.13	10
17	Orientation Workshop for Industry Members of IMCs (Directorate General of Employment & Training - DGE&T)	18.03.14		30
18	Orientation Workshop for Industry Members of IMCs (DGE&T)	20.03.14		38
19	Orientation Workshop for Industry Members of IMCs (DGE&T)	21.03.14		36
20	Orientation Workshop for Industry Members of IMCs (DGE&T)			0
21	Workshop on Strengthening of Business Membership Orgns.	21.03.14		43
22	Workshop for Hindustan Latex Family Planning Promotion Trust	21.05.13	22.05.13	20
23	Workshop on Live Surgery (Fahima)	09.06.13		300
24	Seminar on Bio-medical Waste Mgt., Toxics Links & Guide Foundation for Development (GFFD)	12.06.13		120

Sl.No.	Name of Programme	DURATION		Trainees
		From	To	
25	AGM of Heritage Foods (India) Ltd.	17.07.13		120
26	Workshop for Sr. Managers of Care Hospital	30.10.13		40
27	National Conference on Stress Management	08.11.13	09.11.13	200
28	Competency Workshop for Care Hospitals	24.12.13		30
29	Doctors Meet, Kurnool Medical College	11.01.14	12.01.14	120
30	Regional GMP Strengthening Workshop for Indian Pharmaceuticals Mfgs. Focused on GMP in production of API and Oral Solid Dosage Forms (FICCI)	29.01.14		130
31	Workshop for Care Hospital	01.03.14	2.03.14	24
32	Audit Committee meeting of Heritage	21.03.14		15
33	Heritage budget meeting	27.03.14	28.03.14	15
34	COWE workshop	25.03.14		10
35	International Workshop on Natural Dyes	05.03.14	07.03.14	300
36	Proprogramme on Equity for Equity: BASIX	01.04.13	02.04.13	55
37	Programme for All India Peace & Solidarity Organisation	05.04.13	07.04.13	120
38	Programme for Society for Elimination of Rural Poverty, Andhra Pradesh	08.04.13	09.04.13	40
39	Programme for Rural Development, A.P.	15.04.13	18.04.13	50
40	Prog. for Indira Kranthi Patham, Government of Andhra Pradesh	22.04.13		25
41	Programme on KRA/KPI Goal Setting Exercise: BASIX-IGS	01.05.13	07.05.13	35
42	Programme for Care Hospitals	05.06.13	07.06.13	35
43	Programme on Bring Back BASIX	12.06.13	14.06.13	40
44	Yoga Programme for officials of BASIX	08.07.13	10.07.13	18
45	Trainer Capacity Building Programme (NIESBUD & IFC)	22.07.13	25.07.13	20
46	Induction Training Prog. & Review Meeting, Deptt.of WD & CW, Government of Andhra Pradesh	23.07.13	25.07.13	40
47	Cap. Training WASH Partners on Advocacy Skills for Centre for World Solidarity	17.08.13	18.08.13	25
48	Outbound Training Programme for Senior Managers of Care Hospitals	23.08.13	24.08.13	40
49	National Conference 2013 on Stress Management Professional (with SML)	08.11.13	09.11.13	200

Sl.No.	Name of Programme	DURATION		Trainees
		From	To	
50	Competencies Orientation Workshop for the Senior Managers of CARE Hospitals	22.11.13	23.11.13	40
51	Community based Certificate Course on Micro Finance for APMAS	02.12.13	14.12.13	35
52	Induc Training Programme for newly recruited Officials of National Insurance Co.	06.12.13	28.12.13	75
53	IT Intervention and Follow up in KTAC and KEE for Society for Elimination of Rural Poverty (SERP), Deptt. Rural Dev., Andhra Pradesh	27.12.13	28.12.13	45
54	ToT for RYK Trainers, Rajiv Education and Employment Mission Andhra Pradesh (REEMAP)	03.02.14	06.02.01	25
55	ToT on SHB Bank Lingage for West Bengal Bankers (APMAS)	10.02.14	12.02.14	15
56	Programme for SERP Officials	10.02.14	15.02.14	25
57	Programme for REEMAP	17.02.14	20.02.14	30
	Total			3,499

Annexure IV

Research and Consultancy

Sl.No.	Name of Research/Consultancy Project
1	RCTP
2	IPFC
3	Evaluation Study of On-going Schemes in Puducherry & Yanam of NBCFDC
4	Evaluation of the Scheme "Export Promotion (Training Programmes on Packaging for Exports)" sponsored by DC (MSME)
5	Evaluation of the Scheme "Vendor Development" sponsored by DC (MSME)
6	GIZ Project
7	Concurrent/Final Evaluation (Impact assessment) of CSR for ECIL
8	Evaluation of Pochampally Handloom Cluster sponsored by DC (Handlooms)
9	DSR for Harihara Khadi Cluster sponsored by KVIC, Mumbai
10	Impact Assessment Study of Completed CSR projects for 2010-11, 2011-12 and 2012-13 for BHEL, Hyderabad

Annexure V

Performance indicators since inception (1962-2014)

Year	Training		Research and Consultancy	Educational	
	No. of Programmes	No. of Participants	No. of Projects	No. of Programmes	No. of Participants
1962-63	03	80	01		
1963-64	06	159	02		
1964-65	09	223	01		
1965-66	12	199	01		
1966-67	14	189	06		
1967-68	15	186	06		
1968-69	14	156	06		
1969-70	14	314	04		
1970-71	22	313	12		
1971-72	23	394	12		
1972-73	39	881	17		
1973-74	45	1,932	14		
1974-75	42	2,078	04		
1975-76	61	1,666	14		
1976-77	76	1,319	15		
1977-78	103	1,634	19		
1978-79	62	1,324	10		
1979-80	79	1,189	11		
1980-81	63	1,234	13		
1981-82	59	1,199	14		
1982-83	92	1,426	09		
1983-84	78	995	13		
1984-85	70	987	16		
1985-86	66	1,158	22		
1986-87	97	1,772	18		
1987-88	85	1,484	16		
1988-89	86	1,397	09		

Year	Training		Research and Consultancy	Educational	
	No. of Programmes	No. of Participants	No. of Projects	No. of Programmes	No. of Participants
1989-90	92	1,515	06		
1990-91	61	1,254	07		
1991-92	114	1,358	06		
1992-93	110	1,938	04		
1993-94	113	2,011	03		
1994-95	57	715	02		
1995-96	42	756	06		
1996-97	66	1,141	05		
1997-98	88	1,597	11		
1998-99	559	23,094	09	01	07
1999-2000	238	8,257	09	26	853
2000-01	164	4,687	14	33	1216
2001-02	164	4,740	11	45	1192
2002-03	382	16,592	23	33	809
2003-04	611	37,434	33	32	619
2004-05	241	7,948	20	39	834
2005-06	242	9,014	23	37	626
2006-07	213	6,852	21	21	383
2007-08	157	5,312	47	11	276
2008-09	187	8,799	68	23	79
2009-10	215	10,702	76	14	863
2010-11	676	22,242	91		
2011-12	698	25,079	74		
2012-13	1406	47,840	12		
2013-14	1354	43,287	10		
Total	9563	320,052	876	315	7,757

Annexure VI

Alumni of Participants of International Programmes

Sl. No.	Country	No. of persons Trained	Sl. No.	Country	No. of persons Trained
1	Afghanistan	421	28	Cote D'Ivoire	50
2	Algeria	15	29	Croatia	1
3	Antigua & Barbuda	13	30	Cuba	15
4	Angola	4	31	Czech Republic	2
5	Armenia	23	32	Djibouti	2
6	Argentina	1	33	Dominica	2
7	Bangladesh	461	34	Dominican Republic	1
8	Azerbaijan	2	35	Ecuador	15
9	Barbados	12	36	Egypt,	101
10	Belarus	4	37	El Salvador	14
11	Belize	10	38	Eritrea	6
12	Benin	8	39	Estonia	4
13	Bhutan	86	40	Ethiopia	203
14	Bolivia	3	41	Fiji	52
15	Botswana	38	42	Gabon	2
16	Brazil	7	43	Gambia, The	31
17	Brunei	5	44	Georgia	14
18	Bulgaria	2	45	Ghana	371
19	Burkina Faso	12	46	Greece	1
20	Burundi	8	47	Guatemala	8
21	Cambodia	99	48	Guinea	10
22	Cameroon	8	49	Guyana	65
23	Cape Verde	2	50	Guinea Bissau	1
24	Chile	12	51	Haiti	1
25	China	2	52	Honduras	5
26	Colombia	3	53	India	3
27	Costa Rica	19	54	Indonesia	167

Sl. No.	Country	No. of persons Trained	Sl. No.	Country	No. of persons Trained
55	Iran	60	84	Nepal	153
56	Iraq	191	85	Nicaragua	10
57	Jamaica	5	86	Niger	26
58	Japan	1	87	Nigeria	295
59	Jordan	63	88	Oman	90
60	Kazakhstan	137	89	Pakistan	4
61	Kenya	192	90	Palestine	19
62	Kiribati	3	91	Panama	11
63	Korea	28	92	Papua New Guinea	45
64	Kyrgyzstan	49	93	Paraguay	2
65	Lao PDR	72	94	Peru	6
66	Lesotho	24	95	Philippines, The	237
67	Liberia	31	96	Poland	4
68	Libya	4	97	Romania	3
69	Lithuania	15	98	Russia	73
70	Macedonia	4	99	Rwanda	12
71	Madagascar	56	100	Samoa	12
72	Malawi	146	101	Saudi Arabia	2
73	Malaysia	203	102	Senegal	35
74	Maldives	73	103	Seychelles	14
75	Mali	7	104	Sierra Leone	111
76	Malta	5	105	Singapore	5
77	Mauritius	186	106	Solomon Islands	25
78	Mexico	20	107	Somalia	11
79	Mongolia	64	108	South Africa	95
80	Morocco	21	109	South Sudan	2
81	Mozambique	11	110	Sri Lanka	498
82	Myanmar	287	111	St. Kitts & Nevis (WI)	1
83	Namibia	28	112	St. Lucia (WI)	8

Sl. No.	Country	No. of persons Trained	Sl. No.	Country	No. of persons Trained
113	St. Vincent (WI)	2	128	Tuvalu	1
114	Sudan	303	129	Uganda	347
115	Suriname	23	130	United Arab Emirates	1
116	Swaziland	22	131	Ukraine	6
117	Syria	133	132	USA	15
118	Tajikistan	52	133	Uzbekistan	133
119	Tanzania	304	134	Vanuatu	2
120	Thailand	166	135	Venezuela	5
121	Timor Leste	2	136	Vietnam	116
122	Togo	14	137	Yemen	123
123	Tonga	7	138	Zaire (Democratic Republic of Congo)	21
124	Trinidad & Tobago	24	139	Zambia	193
125	Tunisia	14	140	Zimbabwe	150
126	Turkey	18			
127	Turkmenistan	6			

Total Countries: 140 Participants: 8425

Annexure-VII

Members of the Governing Council

Sl.No.	Name and Address	
1	Hon'ble Minister of MSME Government of India Udyog Bhavan, New Delhi - 110 011	Chairman (ex-officio)
2	Secretary to the Government of India Ministry of MSME, Government of India Udyog Bhavan, New Delhi - 110 011	Vice-Chairman (ex-officio)
3	Secretary & Development Commissioner (MSME) Ministry of MSME, Government of India Nirman Bhavan, New Delhi - 110 011	Member (ex-officio)
4	Additional Secretary & Financial Adviser, Ministry of MSME, Government of India Udyog Bhavan, New Delhi - 110 011	Member (ex-officio)
5	Joint Secretary (SME) Ministry of MSME, Government of India Udyog Bhavan, New Delhi - 110 011	Member (ex-officio)
6	Joint Secretary (Agro & Rural Industries) Ministry of MSME, Government of India Udyog Bhavan, New Delhi - 110 011	Member (ex-officio)
7	Chairman Coir Board Coir House, M.G. Road, Ernakulam Kochi - 682 016	Member (ex-officio)
8	Executive Director Small Industries Development Bank of India (SIDBI), SIDBI Tower, 15, Ashok Marg Lucknow - 226001	Member (ex-officio)
9	Chief Executive Officer Khadi & Village Industries Commission Gramodaya, 3, Irla Road, Vile Parle (West) Mumbai - 400 056	Member (ex-officio)
10	Chairman and Managing Director The National Small Industries Corporation (NSIC) NSIC Bhawan, Okhla Industrial Estate New Delhi - 110 020	Member (ex-officio)
11	Director Entrepreneurship Development Institute of India (via Ahmedabad Airport & Indira Bridge) P.O. Bhat 382 428, Dist. Gandhinagar, Gujarat	Member (ex-officio)

Sl.No.	Name and Address	
12	Secretary, Industries Department of the Government of one of the States in the Zone	Nominated Member
13	Representative (of the rank of Chief General Manager or above) of a commercial bank	Nominated Member
14	Representative of one national-level association of MSMEs	Nominated Member
15-16	Representatives of two State-level Associations of MSMEs	Nominated Member
17	Representative of one national-level association of micro and small women entrepreneurs	Nominated Member
18	Representative of one prominent academic or training institution in the field of management education or entrepreneurship development	Nominated Member
19-20	Representatives of two active micro finance institutions of SHGs engaged in the promotion of enterprises in the Zone	Nominated Member
21	Director General National Institute for Micro, Small and Medium Enterprises, Yousufguda, Hyderabad - 500 045	Member-Secretary

Annexure-VIII

Members of the Executive Committee

Sl.No.	Name and Address	
1	Secretary to the Government of India Ministry of MSME, Government of India Udyog Bhavan, New Delhi - 110 011	Chairman (ex-officio)
2	Additional Secretary & Development Commissioner (MSME) Ministry of MSME, Government of India Nirman Bhavan, New Delhi - 110 011	Vice-Chairman (ex-officio)
3	Additional Secretary & Financial Adviser, Ministry of MSME, Government of India Udyog Bhavan, New Delhi - 110 011	Member (ex-officio)
4	Joint Secretary (SME) Ministry of MSME, Government of India Udyog Bhavan, New Delhi - 110 011	Member (ex-officio)
5	Joint Secretary (Agro & Rural Industries) Ministry of MSME, Government of India Udyog Bhavan, New Delhi - 110 011	Member (ex-officio)
6	Representative of a State-level association of micro and small enterprises in the State	Nominated Member
7	Representative of an association of micro and small women entrepreneurs	Nominated Member
8	Representative of an academic or training institution dealing with management or entrepreneurship	Nominated Member
9	Director General of the Institute	Member-Secretary

FINANCIALS

Independent Auditors Report

09.12.2014

To
The Director General,
National Institute for Micro, Small and
Medium Enterprises (ni-msme)
Yousufguda,
HYDERABAD 500 045

1. Report on the Financial Statements:

We have audited the accompanying financial statements of National Institute for Micro, Small and Medium Enterprises (ni-msme) ("the Institute"), which comprise the Balance Sheet as at 31st March 2014 and the statement of income Expenditure for the year then ended and a summary of Significant Accounting Policies and other explanatory information.

2. Management Responsibility for the Financial Statements:

Management is responsible for the preparation of these financial statement that give true and fair view of the financial position and financial performance of "the Institute" in accordance with the accounting principles generally accepted in India. This responsibility includes the design, implementation and maintenance of internal control relevant to the preparation and presentation of the financial statements that give a true and fair view and are free from material misstatement, whether due to fraud or error.

3. Auditors' Responsibility:

Our responsibility is to express an opinion on these financial statements based on our audit. We conducted our audit in accordance with the Standards on Auditing issued by the Institute of Chartered Accountants of India. Those Standards require that we comply with ethical requirements and plan and perform the audit to obtain reasonable assurance about whether the financial statements are free from material misstatements.

An audit involves performing procedures to obtain audit evidence about the amounts and disclosures in the financial statements. The procedures selected depend on the auditors' judgment, including the assessment of the risks of materials misstatement of the financial statement, whether due to fraud or error. In making those risk assessment, the auditor considers internal control relevant to "the Institute's" preparation and fair presentation of the financial statements in order to design audit procedures that are appropriate in the circumstances.

An audit also includes evaluating the appropriateness of accounting policies used and the reasonableness of the accounting estimates made by the management, as well as evaluating the overall presentation of the financial statements.

We believe that the audit evidence we have obtained is sufficient and appropriate to provide a basis for our audit opinion.

4. Our comments on the financial statements for the year are as follows::

- (a) Balances appearing under Debtors, Creditors, advance received/paid are subject to confirmation/reconciliation and consequential adjustments, the impact which on these statements are not quantifiable by us.
- (b) Reference is invited to Note 4 of Schedule 25 regarding demand from Commissioner of Customs, Central Excise and Service Tax for Rs. 387.99 Lacs towards payment of Service Tax for the period from 2004-05 to 2008-09 and amount of Rs.388.05 Lacs as penalties. Further demand of Rs. 77.92 Lakhs for the year 2009-10, Rs. 225.04 Lakhs for the year 2010-11, Rs. 274.98 Lakhs for the year 2011-12, and Rs. 415.33 Lakhs for the year 2012-13 (total demand of Rs. 1769.32 Lakhs) have also been raised by the Commissioner of Customs, Central Excise and Service tax. "The Institute" has filed an appeal before Hon'ble Customs; Excise & Service tax Appellate Tribunal, Bangalore. In the absence of any provision for the same, we are not in a position to comment on the ultimate liability that may arise at a later date and its impact on the financial statements.
- (c) Out of total landed area of 107 Acres Guntas 22 owned by "the Institute", encroachments have been identified to extent of Acres 58 and Guntas 2. "The Institute" is stated to have made relentless efforts including civil suit in the competent court of law, though secured positive verdict in favor of "the Institute", but could not regain the encroached land due to law and order problems, as per the advice of District collector, Hyderabad. Hence it is stated that "the Institute" is ultimately in actual possession of land area of Acre 49 and Guntas 20 only.
- (d) (i) Internal controls and systems are required to be strengthened in respect of programs conducted by outside agencies on behalf of "the Institute", particularly IT programs where the fees are collected by those agencies and remitted to "the Institute"
- (ii) The scope of Internal audit coverage needs to be enhanced in view of the increase in the activities of "the Institute", particularly in the areas of expenditure incurred on various programs.
- (iii) Sundry Debtors includes amounts to be received from "other Clients" of Rs. 13.75 Lakhs pending receivable for more than three years, which in our opinion is doubtful of realization and provision for the same is to be made. In respect of irrecoverable Balances written off during the year of Rs.290.41 Lacs, approval from EC to be obtained
- (e) According to the information and explanations given to us, physical verification of the assets of "the Institute" were carried out during the year. However in the absence of the reconciliation between the physical records and book records, we are not in position to comment on the differences/discrepancies and their impact on the financial statements.

5. Opinion:

Subject to our comments given in paragraph 4 above, we report that:

In our opinion and to the best of our information and according to the explanations given to us, the aforesaid financial statements give the information required by the Act, in the manner so required and give a true view in conformity with the accounting principles generally accepted in India.

- (a) In the case of Balance sheet, of the state of affairs of the “the Institute” as at 31st March 2014.
- (b) In the case of the statement of Income and Expenditure, of the Excess of Income over expenditure for the year ended 31st March 2014.
- (c) In the case of Receipts and Payments Account, of the Receipts and payments for the year ended 31st March 2014.

For SWAMY AND SESHADRI,
Chartered Accountants
(Firm Registration No: 0039135)

B. Krishna Swamy
Partner
Membership No: 019096

Place: Hyderabad
Date: 9th December 2014

Balance Sheet

NATIONAL INSTITUTE FOR MICRO, SMALL AND MEDIUM ENTERPRISES
YOUSUFGUDA, HYDERABAD - 500 045.
BALANCE SHEET AS AT 31st MARCH 2014

DESCRIPTION	(Amount in RS ₹)		
	Schedule	2013-14	2012-13
CORPUS/CAPITAL FUND AND LIABILITIES			
CORPUS / CAPITAL FUND	1	61165535	61165535
RESERVES AND SURPLUS	2	173369558	97054563
EARMARKED / ENDOWMENT FUNDS	3	12143086	4515078
SECURED LOANS AND BORROWINGS	4	0	0
UNSECURED LOANS AND BORROWINGS	5	0	10125
DEFERRED CREDIT LIABILITIES	6	0	0
CURRENT LIABILITIES AND PROVISIONS	7	75739044	111246752
TOTAL		322417223	273992053
ASSETS			
CFIXED ASSETS	8	22722047	20324672
INVESTMENTS-EARMARKED/ENDOW- MENT FUNDS	9	0	
INVESTMENTS - OTHERS	10	0	0
CURRENT ASSETS, LOANS, ADVANCES	11	299695176	253667381
MISCELLANEOUS EXPENDITURE (to the extent not written off or adjusted)			0
TOTAL		322417223	273992053
SIGNIFICANT ACCOUNTING POLICIES	24		
NOTES TO ACCOUNTS	25		

Admn.& Accounts Officer

Chief Administrative Officer

Director General.

Place: Hyderabad

Date:

As per our report of even date

NATIONAL INSTITUTE FOR MICRO, SMALL AND MEDIUM ENTERPRISES
 YOUSUFGUDA, HYDERABAD 500 045
 INCOME AND EXPENDITURE ACCOUNT FOR THE YEAR ENDED 31st MARCH 2014

DESCRIPTION	(Amount in RS ₹)		
	Schedule	2013-14	2012-13
(A) INCOME			
Income from Sales / Services	12	0	0
Grants / Subsidies	13	404226185	316107099
Fees / Subscriptions	14	15127492	20218822
Income from Investments	15	0	0
(Income from Investments from earmarked/ endowment funds transferred to /Funds)			
Income from Royalty, Publications, etc.	16	1075234	676588
Interest Earned	17	8770970	7022451
Other Income	18	5777263	142068
Increase/(decrease) in stock of finished goods and works-in-progress)	19	0	0
Total (A)		434977144	344167028
(B) EXPENDITURE			
Establishment Expenses	20	63382006	77741975
Other Administrative Expenses, etc.	21	293112815	216674348
Expenditure on Grants, Subsidies, etc.	22	0	0
Interest/Bank charges	23	16234	28317
Depreciation (Net Total at the year-end- corresponding to Schedule 8)		2151094	1224356
Total (B)		358662149	295668996
Balance being excess of Income over Expenditure (A-B)		76314995	48498032
Add: Prior period income/(-) Expenditure		0	-414830
Net income		76314995	48083202
Transfer to Special Reserve (Specify each)		0	0
Transfer to General Reserve		76314995	48083202
Transfer to Capital Fund		0	0
Significant Accounting Policies	24		
Notes To Accounts	25		

Admn.& Accounts Officer

Chief Administrative Officer

Director General.

Place: Hyderabad
Date:

As per our report of even date

SCHEDULES FORMING PART OF BALANCE SHEET AS AT 31st MARCH 2014

DESCRIPTION	(Amount - Rs.)		(Amount - Rs.)		
	2013-14		2012-13		
SCHEDULE 1 - CORPUS / CAPITAL FUND:					
Balance as at the beginning of the year	61165535		61165535		
Add: Contributions towards Corpus / Capital Fund					
Add/(Deduct): Balance of net income/(expenditure) transferred from the Income and Expenditure Account	0	61165535	0	61165535	
BALANCE AS AT THE YEAR - END		61165535		61165535	
SCHEDULE 2 - RESERVES AND SURPLUS:					
1. Capital Reserve:					
As per last Account	783139		783139		
Addition during the year			0		
Less: Deductions during the year		783139	0	783139	
2. Revaluation Reserve:					
As per last Account			0		
Addition during the year			0		
Less: Deductions during the year			0	0	
3. Special Reserves:					
As per last Account	1248585		1248585		
Addition during the year	0		0		
Less: Deductions during the year	0	1248585	0	1248585	
4. General Reserve:					
As per last Account	95022839		46939637		
Addition/Less: Addition during the year	76314995		48083202		
		171337834		95022839	
TOTAL		173369558		97054563	
SCHEDULE 3 - EARMARKED / ENDOWMENT FUNDS					
	FUND-WISE BREAK UP				
	2013-14				
	Capital	Recurring	Activities	Total	2012-13
a) Opening balance of the funds	3130389	587189	797500	4515078	9576744
b) Additions to the funds:					
i. Grants from Ministries for Activities	0	0	336105788	336105788	193789087
ii. Grants from Ministry of MSME	0	0	0	0	0
iii. Income from investments made	0	0	0	0	0
iv Other additions: Grants due Ministries		0	74948405	74948405	119246392
v Grant from Govt. of A.P for Poly Green House	0	800000	0	800000	1200000
TOTAL (a+b)	3130389	1387189	411851693	416369271	323812223

DESCRIPTION	(Amount - Rs.)		(Amount - Rs.)	
	2013-14		2012-13	
c) Utilisation / Expenditure towards objectives of funds				
i. Capital Expenditure				
Fixed Assets: Training Building Interiors, etc.	0	0	0	2468168
- Poly Green House	0	267291	0	267291
- RCTP (DC(Handicrafts))	172201	0	0	172201
- CRMA (DC(Handloms))	0	0	0	0
- Addl. floor over D, E & F	0	0	0	0
Total c(i)	172201	267291	0	439492
ii. Revenue Expenditure				
- Programmes & projects	0	0	403786693	403786693
Total c(ii)	0	0	403786693	403786693
TOTAL (c)	172201	267291	403786693	404226185
NET BALANCE AS AT THE YEAR-END (a+b-c)	2958188	1119898	8065000	12143086
SCHEDULE 4 - SECURED LOANS AND BORROWINGS:				0
1. Central Government				0
2. State Government (Specify)				
3. Financial Institutions				
a. Term Loans		0		0
-Interest accrued and due		0		0
b. Other Loans (Specify)		0		0
-Interest accrued and due		0	0	0
4. Other Institutions and Agencies			0	0
5. Debentures and Bonds			0	0
6. Others (Specify)			0	0
TOTAL			0	0
		2013-14		2012-13
SCHEDULE 5 - UNSECURED LOANS AND BORROWINGS:				
1. Central Government			0	10125
2. State Government (Specify)				0
3. Financial Institutions				0
4. Banks:				
a. Term Loans			0	0
b. Other Loans (Specify)			0	0
5. Other Institutions and Agencies			0	0
6. Debentures and Bonds			0	0
7. Others (Specify)			0	0
TOTAL			0	10125

DESCRIPTION	(Amount - Rs.)		(Amount - Rs.)	
	2013-14		2012-13	
SCHEDULE 6 - DEFERRED CREDIT LIABILITIES:				
a) Acceptances secured by hypothecation of capital equipment and other assets		0		0
b) Others		0		0
TOTAL		0		0
		2013-14		2012-13
SCHEDULE 7 - CURRENT LIABILITIES AND PROVISIONS				
A. CURRENT LIABILITIES				
1. Acceptances		0		0
2. Sundry Creditors:				
a) Creditors	0		0	
b) Others	8897242	8897242	7583557	7583557
3. Advances Received		0		0
4. Interest accrued but not due on:				
a) Secured Loans / borrowings	0			
b) Unsecured Loans / borrowings	0	0		0
5. Statutory Liabilities:				
a) Overdue	0			0
b) Others	0	0	0	0
6. Other current Liabilities: Outstanding expenses		32905309	80107300	80107300
TOTAL (A)		41802551		87690857
B. PROVISIONS				
1. For Taxation		0		0
2. Gratuity	14691854		14691854	
Add: Provision	9733836		1119024	
Less: Paid to RBFC	5059309	19366381	1119024	14691854
3. Superannuation / Pension	0	0		0
4. Earned Leave Encashment	8922553		8922553	
Add: Provision	8590264		3368041	
Less: Paid to RBFC	2942705	14570112	3368041	8922553
5. Trade Warranties / Claims		0		0
6. Others (Specify)		0		0
TOTAL (B)		33936493		23614407
TOTAL (A + B)		75739044		111246752
SCHEDULE 9 - INVESTMENT FROM EARMARKED/ENDOWMENT FUNDS				
		2013-14		2012-13
1. In Government Securities		0		0
2. Other approved Securities		0		0
3. Shares		0		0
4. Debentures and Bonds		0		0
5. Subsidiaries and Joint Ventures		0		0
6. Others (to be specified)		0		0
TOTAL		0		0

DESCRIPTION	(Amount - Rs.)	
	2013-14	2012-13
SCHEDULE 10 - INVESTMENTS - OTHERS	2013-14	2012-13
1. In Government Securities	0	0
2. Other approved Securities	0	0
3. Shares	0	0
4. Debentures and Bonds	0	0
5. Subsidiaries and Joint Ventures	0	0
6. Others (to be specified)	0	0
TOTAL	0	0
SCHEDULE 11 - CURRENT ASSETS, LOANS, ADVANCES ETC.	2013-14	2012-13
A. CURRENT ASSETS:		
1. Inventories:		
a) Stores and Spares	0	0
b) Loose Tools	0	
c) Stock-in-trade	0	
Finished Goods	0	
Work-in-progress	0	
Raw Materials	0	
2. Sundry Debtors:	32764635	32693652
a) Debts Outstanding for a period exceeding six months	58862840	124071967
b) Others	91627475	156765619
3. Cash balances in hand (including cheques / drafts and imprest)	147550	200119
4. Bank Balances:		
a) with Scheduled Banks:		
- On Current Accounts	3040747	9638806
- On Deposit Accounts (includes margin money)	160575000	74575000
- On Savings Accounts	31076917	3379542
b) With non-Scheduled Banks:		
- On Current Accounts	0	0
- On Deposit Accounts (includes margin money)	0	0
- On Savings Accounts	0	0
5. Post Office-Savings Accounts		0
TOTAL (A)	286467689	244559086
SCHEDULE 11 - CURRENT ASSETS, LOANS, ADVANCES ETC. (Contd.)	2013-14	2012-13
B. LOANS, ADVANCES AND OTHER ASSETS:		
1. Loans:		
a) Staff	4178203	195965
b) Other Entities engaged in activities/ objectives similar to that of the Entity	0	0
c) Other (specify)	0	0
2. Advances and other amounts recoverable in cash or in kind or for value to be received:	4178203	195965

DESCRIPTION	(Amount - Rs.)		(Amount - Rs.)	
	2013-14		2012-13	
a) On Capital Account	2620027		3656486	
b) Prepayments	0		0	
c) Others	2346817	4966844	1524599	5181085
3. Income Accrued:				
a) On Investments from Earmarked / Endowment Funds		0		0
b) On Investments - Others	245679		0	
c) On Loans and Advances	236766		236766	
d) Others (includes income due unrealised - Rs.)	0	482445	0	236766
4. Expenditure on Projects under progress				
5. Incometax / TDS		3599995		3494479
TOTAL (B)		13227487		9108295
TOTAL (A + B)		299695176		253667381
SCHEDULE 12 - INCOME FROM SALES / SERVICES		2013-14		2012-13
1) Income from Sales				
a) Sale of Finished Goods	0		0	
b) Sale of Raw Material	0		0	
c) Sale of Scraps	0		0	0
2) Income from Services				
a) Labour and Processing Charges				
b) Professional / Consultancy Services: Projects completed		0		0
Projects in progress		0		0
c) Agency Commission and Brokerage	0		0	
d) Maintenance Services (Equipment / Property)		0		0
e) Others (Specify)	0	0	0	0
TOTAL		0		0
SCHEDULE 13 - GRANTS / SUBSIDIES		2013-14		2012-13
(Irrevocable Grants & Subsidies Received)				
1) Central Government	0		0	
2) State Government (s)	0		0	
3) Government Agencies Ministries/Depts., State Depts.	404226185		316107099	
4) Institutions / Welfare Bodies	0		0	
5) International Organisations	0		0	
6) Others (Specify)	0	404226185	0	316107099
TOTAL		404226185		316107099
SCHEDULE 14 - FEES/SUBSCRIPTIONS		2013-14		2012-13
1) Entrance Fees	0		0	
2) Annual Fees / Subscriptions	53450		924500	
3) Seminar / Programme Fees	15074042		19294322	
4) Consultancy Fees	0		0	
5) Others: Educational Programmes	0	15127492	0	20218822
TOTAL		15127492		20218822

DESCRIPTION	(Amount - Rs.)		(Amount - Rs.)	
	2013-14		2012-13	
	Investment from Earmarked Fund		Investment - Others	
SCHEDULE 15 - INCOME FROM INVESTMENTS	2013-14	2012-13	2013-14	2012-13
(Income on Invest. from Earmarked / Endowment Funds transferred to Funds)				
1) Interest				
a) On Govt. Securities	0		0	
b) Other Bonds / Debentures	0	0	0	0
2) Dividends:				
a) On Shares	0		0	
b) On Mutual Fund Securities	0	0	0	0
3) Rents		0		0
4) Others (Specify)		0		0
TOTAL		0		0
TRANSFERRED TO EARMARKED / ENDOWMENT FUNDS		0		0
SCHEDULE 16 - INCOME FROM ROYALTY, PUBLICATION ETC.,	2013-14		2012-13	
1) Income from Royalty	0		0	
2) Income from Publications	0		49820	
3) Others: Infrastructure facilities	1075234	1075234	626768	676588
TOTAL		1075234		676588
SCHEDULE 17 - INTEREST EARNED	2013-14		2012-13	
1) On Term Deposits:				
a) with Scheduled Banks	7722596		6324559	
b) With Non-Scheduled Banks	0		0	
c) With Institutions	0		0	
d) Others	0	7722596	0	6324559
2) On Savings Accounts:				
a) with Scheduled Banks	1048374		650264	
b) With Non-Scheduled Banks	0		0	
c) With Institutions	0		0	
d) Others	0	1048374	0	650264
3) On Loans:				
a) Employees / Staff	0			
b) Others	0	0	0	0
4) Interest on Debtors and Other Receivables		0		47628
TOTAL		8770970		7022451
SCHEDULE 18 - OTHER INCOME	2013-14		2012-13	
1) Profit on Sale / disposal fo Assets:				
a) Owned assets	0		0	
b) Assets acquired out of grants, or received free of cost		0		0
2) Export Incentives realised	0		0	
3) Fees for Miscellaneous Services	0		0	
4) Miscellaneous Income	5777263	5777263	142068	142068

DESCRIPTION	(Amount - Rs.)		(Amount - Rs.)	
	2013-14		2012-13	
TOTAL		5777263		142068
SCHEDULE 19 - INCREASE/(DECREASE) IN STOCK OF FINISHED GOODS & WORK IN PROGRESS				
		2013-14		2012-13
a) Closing Stock				
- Finished Goods			0	
- Work-in-progress			0	0
b) Less: Opening Stock				
- Finished Goods			0	
- Work-in-progress			0	0
NET INCREASE / (DECREASE) [a-b]		0		0
SCHEDULES FORMING PART OF INCOME & EXPENDITURE FOR THE PERIOD 31st MARCH 2014				
SCHEDULE 20 - ESTABLISHMENT EXPENSES		2013-14		2012-13
a) Salaries and Wages	37548874		39858268	
b) Allowances and Bonus	2760832		1282555	
c) Contribution to Provident Fund	3477913		3654230	
d) Contribution to Other Fund (Specify)	0		0	
e) Staff Welfare Expenses	305524		207060	
f) Expenses on Employees Retirement and Terminal Benefits	19288863	63382006	32739862	77741975
TOTAL		63382006		77741975
SCHEDULE 21 - OTHER ADMINISTRATIVE EXPENSES ETC.		2013-14		2012-13
a) Purchases	0	0		0
b) Labour and processing expenses			0	0
c) Cartage and Carriage Inwards			0	0
d) Electricity and power	4046865		3110283	
e) Water charges	2753980		2296487	
f) Insurance				
g) Repairs and maintenance	3944057		1461501	
h) Excise Duty	0		0	
i) Rent, Rates and Taxes	1129139		1115461	
j) Vehicles Running and Maintenance	1416684		1331865	
k) Postage, Telephone and Communication Charges	1120997		1162673	
l) Printing and Stationary	1867922		1276414	
m) Travelling and Conveyance Expenses	651331		270554	
n) Expenses on Seminar / Workshops	0		0	
o) Subscription Expenses (Memberships)	43320		48924	
p) Expenses on Fees (SENDOC)	1216676		882057	
q) Audit fee	108000		109814	
r) Statutory Audit fee	44944		25000	
s) Hospitality Expenses	14472449		11383463	
t) Business Development Expenses	1040534		469655	
u) Provision for Bad and Doubtful Debts / Advances	0		0	

DESCRIPTION		(Amount - Rs.)		(Amount - Rs.)	
		2013-14		2012-13	
	v) Irrecoverable Balances Written-off	29041112		0	
	w) Golden jubilee Celebrations Expenditure	3611565		0	
	x) Freight and Forwarding Expenses	0		0	
	y) Distribution Expenses	0		0	
	z) Advertisement and Publicity	264322	66773897	125986	25070137
	A) Activity expenses- National announced programmes	6079524			5090184
	National sponsored programmes	187590760			150483826
	International programmes	29885398		32467506	
	Seminar&Workshops	134924		462227	
	Other programmes	0		0	
	Consultancy projects	2401460		2513224	
			226092066		191016967
	(aa) Projects against grants		0		0
	(ab) Others: Legal expenses		0		170104
	Implementation of Official Language (Hindi)		0		117500
	SME University Preliminary Expenses		89888		0
	EC/GC/Society meeting Expenses		148964		299640
	International Block: Preliminary expenses		8000	0	0
Losses written off	Losses written off	0	0	0	0
	TOTAL		293112815		216674348
SCHEDULE 22 - EXPENDITURE ON GRANTS, SUBSIDIES ETC.		2013-14		2012-13	
	A) Grants given to Institutions/ Organisations		0		0
	b) Subsidies given to Institutions / Organisations		0		0
	TOTAL		0		0
SCHEDULE 23 - INTEREST		2013-14		2012-13	
	a) On Fixed Loans	0		0	
	b) On Other Loans (including Bank Charges): Bank charges	16234		28317	
	c) Others (Specify)	0	16234		28317
	TOTAL		16234		28317

Schedule 24 - Significant Accounting Policies

1. BASIS FOR PREPARATION OF FINANCIAL STATEMENTS

The financial statements are prepared under the historical cost convention, the generally accepted accounting principles in India, the Applicable Accounting Standards and are on accrual basis unless otherwise stated.

2. INVENTORY VALUATION

Inventories are valued at lower of market price or cost basis.

3. FIXED ASSETS

Fixed assets are stated at cost of acquisition inclusive of inward freight, duties and taxes and incidental and direct expenses relating to acquisition. Assets created out of grants are shown as a deduction from the gross value of the asset concerned in arriving at its book value.

4. DEPRECIATION

Depreciation in respect of the Assets: Buildings, Books and Periodicals has been charged on written down value at the rates as prescribed by CPWD Rules and the rest of the assets are depreciated at the rates prescribed by Income Tax Act, 1961, Roads, compound walls are treated as part of land and no depreciation is provided.

Assets valuing Rs.5,000/- or less each are provided full depreciation.

5. GOVERNMENT GRANTS

Revenue grants received from Government towards recurring activities-are accounted as Income on accrual basis.

Grants related to specific fixed assets are shown as a deduction from: the Gross value of the asset concerned in arriving at its book value.

Schedule 25 - Notes to Accounts

1. GRANTS

- 1.1. Unspent grant of Rs.29,58,188/- received during the year 2010 towards the capital (non-recurring) expenditure on Resource Centre for Traditional Paintings in Handicrafts (RCTP) is pending utilization and will be utilized during the financial year 2014-15.
- 1.2. An amount of Rs.8,51,84,621/- was to be received from different Ministries for various activities executed during the year.
- 1.3. Recurring including amounts receivable and unspent carried forward from 2012-13 & non-recurring grants received during the year including unspent grant brought forward from previous year, expenditure incurred and unspent balance carried to next year are indicated as below:

Nature of grant	Amount Rs.	Expenditure Rs.	Unspent Rs.
(a) Recurring grant:			
1.For activities and projects	41,18,51,693	40,37,86,693	80,65,000
Total (a)	41,18,51,693	40,37,86,693	80,65,000
(b) Non -recurring grant:			
1.Resource Centre for Traditional Paintings	31,30,389	1,72,201	29,58,188
2. Polygreen House	13,87,189	2,67,291	11,19,898

2. RETIREMENT BENEFITS

- 2.1. Liability towards gratuity payable on death / retirement of employees is worked out as per the rules applicable to Central Government employees and provided on accrual basis, as per workings of the Institute.
- 2.2. Provision for accumulated leave encashment benefit to the employees is worked out as per the rules applicable to Central Government employees, and made on accrual basis and computed on the assumption that employees are entitled to receive the benefit as at each year end, as per workings of the Institute.
- 2.3. Pursuant to the decision taken by the Executive Committee in the 5th meeting held on 1st February, 2010, accumulations under the fund relating to the Employees retirement benefits were transferred to the separate fund account and the same is administered by a Committee called "Retirement Benefits Fund (RBF) Committee." Against the amounts of Rs.4,19,38,507 calculated up to 31 March 2014, Rs.80,02,014 has been transferred to Committee and Rs. 3,39,36,493 are to be transferred to Committee reflected in balance sheet as current liability.
- 2.4. Contribution at 12% of pay plus DA of each employee as Employers share towards Provident Fund amounting to Rs.31,92,134 for the period from 1.4.2013 to 28.2.2014 has been transferred to ni-msme PF Trusteeship Committee and contribution of Rs.2,85,779 is reflected in balance sheet as current liability.

2.5. Pursuant to the decision taken by the Executive Committee in the meeting held on 14.12.1989, the Group Insurance scheme of Life Insurance Corporation in lieu of Employees Deposit Linked Insurance Scheme, 1976 is implemented for the employees of the Institute. The annual expenditure on renewal of Group Insurance Policy incurred is Rs. 1,23,149.

3. OTHERS

Land includes an area of 43 acres 8 guntas acquired from private parties at the rate of Rs.4,000/- per acre as directed by the Government of Andhra Pradesh. However, it was enhanced to Rs.12,000/- per acre by the City Civil Court and the differential amount of Rs.8,000/- per acre was deposited into the court by the Institute. This additional amount was capitalized as part of the cost of land. However, on appeal preferred by the Institute before the Hon'ble High Court of Andhra Pradesh, on the advise of the Government of India, the High Court reduced the rate per acre by Rs.2,000/- to Rs.10,000/- per acre. The Hon'ble High Court also directed the Special Deputy Collector to collect the differential amount of Rs.2,000/- per acre (totaling to Rs.1,17,648) from various parties to whom the amounts were paid earlier and make over the same to the Institute.

4. CONTINGENT LIABILITIES

No provision was made for Rs.6,40,861/- pertains to earlier year towards liability for conveyance allowance payable to employees as the matter is pending for final judgement in the Hon'ble High Court of Andhra Pradesh. Further, notice was given to the employees for discontinuance of conveyance allowance with effect from 13.10.1992.

Disputed demand from the Commissioner of Customs, Central Excise and Service Tax for Rs.3,88,03,987/- towards payment of service tax for the period from 2004-05 to 2008-09 was received on 28.4.2010. In this connection, an Appeal U/s 86(1) of the Finance Act, 1994 was filed before South Bench of the Customs, Excise and Service Tax Appellate Tribunal, Bangalore. The Appeal was heard by the Bench 18th July, 2012. The Bench considering the submitted facts passed an interim order directing the Institute to deposit an amount of Rs.15.00 lakh and the same was deposited. The Institute has also received demand notices for the years 2009-10, 2010-11, 2011-12 and 2012-13 for payment of tax as indicated below:

2004-05 to 2008-09	(5 years)	Rs. 7,76,03,987	Including penalty
2009-10		Rs. 77,91,726	Appeal before Hon'ble CESTAT, Bangalore is in progress
2010-11		Rs. 2,25,04,499	-do-
2011-12		Rs. 2,74,98,243	-do-
2012-13	Show Cause Notice dated 23-05-2014	Rs. 4,15,33,085	Hearing before the Commissioner (Ser. Tax) Hyderabad - II is in progress.
Total		Rs.17,69,31,540	

5. CAPITAL COMMITMENTS

Estimated value of contracts remaining to be executed on capital account and not provided for (net of advances) was Rs.Nil (Previous year Rs.Nil).

6. CURRENT ASSETS, LOANS AND ADVANCES

In the opinion of the Management, the current assets, loans and advances have a value on realization in the ordinary course of business, equal at least to the aggregate amount shown in the Balance Sheet.

7. TAXATION

In view of there being no taxable income under Income-tax Act 1961, no provision for Income Tax has been considered necessary.

8. REMUNERATION TO AUDITORS

As Auditors

- | | |
|---------------------------|--------------|
| - Taxation matters | Rs. Nil |
| - For Management services | Rs. Nil |
| - For certification | Rs. 44,944/- |

9. Schedules 1 to 25 are annexed to and form an integral part of the Balance Sheet as at 31st March 2014 and the Income and Expenditure Account for the year ended on that date.

10. Previous year figures have been regrouped / rearranged, wherever necessary to conform to the current year's groupings.

Admn. & Accounts Officer

Chief Administrative Officer

Director General

For Swamy & Seshadri
Chartered Accountants
(Firm Regn. No.003913S)

B. Krishna Swamy
Partner
Membership No. 019096

Place: Hyderabad
Date:



SCHEDULE 8(a) - FIXED ASSETS

Particulars of Assets	GROSS BLOCK				Adjusted upto 31.3.2014 on account of				NET BLOCK	
	As on 1.4.2013	For the year		As on 31.3.2014	Grant	As on 31.3.2013	Capital Fund	Total	As on	As on
		Additions	Sale/ Adj.							
Non-Plan										
1. Land	783139	0	0	783139	0	0	0	0	783139	1
2. Internal Roads	332011	0	0	332011	0	0	332010	332010	1	1
3. Buildings	1834158	0	0	1834158	0	1830168	3989	1834157	1	1
4. Furniture & Fixtures	874630	0	0	874630	0	868334	6295	874629	1	1
5. Plant, Machinery & Equipment	2633254	0	0	2633254	0	2627307	5943	2633250	4	4
6. Books & Periodicals	2719188	0	0	2719188	0	2407245	311942	2719187	1	1
7. Transport - Motor Vehicles	115069	0	0	115069	0	104813	10255	115068	1	1
8. Sundry Assets	41276	0	0	41276	0	41273	0	41273	3	3
Total Non-Plan	9332725	0	0	9332725	0	7879140	670434	8549574	783151	783151
Plan										
1. Furniture & Fixtures	1355769	0	0	1355769	0	1327796	27970	1355766	3	3
2. Plant, M/c & Equipment	5768383	0	0	5768383	0	5468970	299406	5768376	7	7
3. Books & Periodicals	7887528	0	0	7887528	0	6416973	1470553	7887526	2	2
4. Buildings	12207513	0	0	12207513	0	5015332	7192166	12207498	15	15
5. Wells	86220	0	0	86220	0	86218	0	86218	2	2
6. Tennis court	15922	0	0	15922	0	7031	8890	15921	1	1
7. Electric Installations	238492	0	0	238492	0	238488	0	238488	4	4
Total Plan	27559827	0	0	27559827	0	18560808	8998985	27559793	34	34
Total Non-Plan & Plan	36892552	0	0	36892552	0	26439948	9669419	36109367	783185	783185

WORKING DETAILS OF ASSETS

Particulars of Assets	GROSS BLOCK				Adjusted upto 31.3.2014 on account of				NET BLOCK	
	As on 1.4.2013	For the year		As on 31.3.2014	Grant	Deprecia- tion	Capital Fund	Total	As on	As on
		Additions	Sale/ Adj.							
5. Plant, Machinery & Equipment										
a. Office Equipment	1446592	0	0	1446592	0	1443405	3186	1446591	1	1
b. Hostel Equipment	413374	0	0	413374	0	413229	144	413373	1	1
c. Canteen Equipment	293174	0	0	293174	0	290559	2614	293173	1	1
d. Plant , Machinery & equipment	480114	0	0	480114	0	480113	0	480113	1	1
Total P.M.E.	2633254	0	0	2633254	0	2627306	5944	2633250	4	4
8. Sundry Assets										
a. Loose Tools	29363	0	0	29363	0	29362	0	29362	1	1
b. Pumpset	9182	0	0	9182	0	9181	0	9181	1	1
c.Training Aids	2731	0	0	2731	0	2730	0	2730	1	1
Total Sundry Assets	41276	0	0	41276	0	41273	0	41273	3	3
Plan										
A. Furniture & Fixtures										
1. Furniture	578146	0	0	578146	0	578145	0	578145	1	1
2. Modernisation of Seminar Rooms 591309	591309	0	32805	624114	0	563336	60777	624113	1	1
3.Fur. & Fix. For Int. Centre	186314	0	0	186314	0	186313	0	186313	1	1
Total-Fur & Fix	1355769	0	0	1355769	0	1327794	60777	1388571	3	3
1. Equipment	132096	0	0	132096	0	132095	0	132095	1	1
2. Letter Press Unit	145172	0	0	145172	0	145171	0	145171	1	1
3. A.V.Trg.Material Division	1997243	0	0	1997243	0	1988755	8487	1997242	1	1
4. Upgradation of nisiet facilities	1164324	0	0	1164324	0	921186	243137	1164323	1	1
5.Installation of Data Processing	2272713	0	0	2272713	0	2233238	39474	2272712	1	1
6. Training Equipment	24684	0	0	24684	0	21557	3126	24683	1	1
7. Press Equipment	32151	0	0	32151	0	26966	5184	32150	1	1
Total PME	5768383	0	0	5768383	0	5468970	299408	5768376	7	7
C. Books & Periodicals										
1. Books	1571054	0	0	1571054	0	1190556	380497	1571053	1	1

Particulars of Assets	GROSS BLOCK				Adjusted upto 31.3.2014 on account of				NET BLOCK	
	As on 1.4.2013	For the year		As on 31.3.2014	Grant	Depreciation	Capital Fund	Total	As on	As on
		Additions	Sale/ Adj.							
2.Periodicals	6316474	0	0	6316474	0	5226417	1090056	6316473	1	1
Total B&P	7887528	0	0	7887528	0	6416973	1470553	7887526	2	2
D. Buildings										
1. International Centre	866648	0	0	866648	0	475776	390871	866647	1	1
2. Electric -Sub-station	253268	0	0	253268	0	122651	130616	253267	1	1
3. Doc. Building	1868543	0	0	1868543	0	944625	923917	1868542	1	1
4. Kitchen Block	221595	0	0	221595	0	115527	106067	221594	1	1
5. International Hostel	3816583	0	0	3816583	0	1275588	2540994	3816582	1	1
6. Additional Storey-Doc. Centre	1966256	0	0	1966256	0	690469	1275786	1966255	1	1
7. Recreation Facilities	282726	0	0	282726	0	124851	157874	282725	1	1
8. Qrs. For Faculty/HW/S.O.	1286781	0	0	1286781	0	402438	884342	1286780	1	1
9. Qrs. For P.D.	751798	0	0	751798	0	235122	516675	751797	1	1
10.Compound Wall & gate	5688	0	0	5688	0	2510	3177	5687	1	1
11.Replacement of New Hostel	130265	0	0	130265	0	130264	0	130264	1	1
12.Fencing land	83590	0	0	83590	0	83589	0	83589	1	1
13.Compound wall	150425	0	0	150425	0	150424	0	150424	1	1
14.Badminton Court	468930	0	0	468930	0	207078	261851	468929	1	1
15. Water Sump	54417	0	0	54417	0	54416	0	54416	1	1
Total Buildings	12207513	0	0	12207513	0	5015328	7192170	12207498	15	15
Open well & Pipelines										
1. Borewell	13601	0	0	13601	0	13600	0	13600	1	1
2. Open well	72619	0	0	72619	0	72618	0	72618	1	1
Total Wells	86220	0	0	86220	0	86218	0	86218	2	2
F. Tennis Court	15922	0	0	15922	0	7031	8890	15921	1	1
G. Electric Installations										
1. Street Lights	111796	0	0	111796	0	111795	0	111795	1	1
2.Laying of Cables	36843	0	0	36843	0	36842	0	36842	1	1
3. Rewiring of Hostel	37602	0	0	37602	0	37601	0	37601	1	1
4. Electrification of Badminton Court	52251	0	0	52251	0	52250	0	52250	1	1
Total Ele.Installations	238492	0	0	238492	0	238488	0	238488	4	4

FIXED ASSETS 8(b) - FIXED ASSETS

Name of the Asset	Gross Block		Depreciation				Total	Capital Fund	Adjustment on account of				Total (9+10+13)	Net Block as on 31.3.2014	Net Block as on		
	As on 1.04.2013	Additions/Adjustment	Total	As on 1.4.13	Rate %	For the Year			Ad-just-	Grants		For 2013-14				Adjust-ment	Total
										Upto 31.3.13	(11)						
(1)	(2)	(3)	(4)	(5)	(6)	(7)	(8)	(9)	(10)	(11)	(12)	(13)	(14)	(15)	(16)		
Modernisation of mistet Buildings	19363078	0	19363078	848007	2.50	9977		857984	18115993	0	0	0	18973977	389101	399078		
A Block	282377		282377	62597	2.50	5495		68092	0	0	0	0	68092	214285	219780		
B Block	1675990		1675990	13218	2.50	368		13586	1648067	0	0	0	1661653	14337	14705		
C Block	4195945	0	4195945	74211	2.50	21976		96187	742686	2500000	0	2500000	3338873	857072	879048		
DEF Block (Gr.Floor)	20347745		20347745	242903	2.50	0		242903	20104841	0	0	0	20347744	1	1		
DEF Block (addl.floor)	33560307	0	33560307	2978	2.50	1433		4411	0	33500000	0	33500000	33504411	55896	57329		
Security Block	509207		509207	8505	2.50	0		8505	500701	0	0	0	509206	1	1		
Training Building	38225437	0	38225437	1239815	2.50	138057		1377872	14270000	17193356	0	17193356	32841228	5384209	5522266		
Staff Quarters	636520	0	636520	99757	2.50	9525		109282	59508	96260	0	96260	265050	371470	380995		
VIP Guest House	84032		84032	1050	2.50	0		1050	82981	0	0	0	84031	1	1		
SENDOC Building	2521117	0	2521117	84665	2.50	12794		97459	1777664	147044	0	147044	2022167	498950	511744		
Ducts & Drains	358222		358222	4478	0.00	0		4478	353743	0	0	0	358221	1	1		
Borewell/Pumpset	190013		190013	40445	2.50	2391		42836	53921	0	0	0	96757	93256	95647		
External Drainage	514157		514157	1875	0.00	0		1875	512281	0	0	0	514156	1	1		
Internal Roads	6060480		6060480	0	0.00	0		0	3171750	2308000	0	2308000	5479750	580730	580730		
Infrastructure	3546465	0	3546465	0	0.00	0		0	1158784	0	0	0	1158784	2387681	2387681		
Landscaping	4430730	0	4430730	503695	2.50	47322		551017	2034143	0	0	0	2585160	1845570	1892892		
Furniture & Fixtures	6882500	0	6882500	1305464	10.00	73699		1379163	2740825	2099222	0	2099222	6219210	663290	736989		
Electric Sub-Station	8286287	0	8286287	787896	2.50	534		788430	7420314	56728	0	56728	8265472	20815	21349		
Equipment	4576357	408283	4984640	1958743	15.00	114196		2072939	2264590				4337529	647111	353024		
Hostel Equipment	2121432	256600	2378032	296849	15.00	114089		410938	738269	582320	0	582320	1731527	646504	503993		
Garden Equipment	6466	110200	116666	3892	15.00	16597		20489	2129	0	0	0	22618	94048	445		
Auditorium	51000		51000	10821	0.00	0		10821	40178	0	0	0	50999	1	1		
Canteen Facilities	244635	342800	587435	48954	10.00	44821		93775	90267	0	0	0	184042	403393	105414		
A.V. Equipment	712600		712600	230724	0.00	0		230724	481875				712599	1	1		
Solar System	1353593		1353593	485248	60.00	142		485390	868109				1353499	94	236		
Air Conditioners	2234161		2234161	430751	0.00	0		430751	417497	1385912	0	1385912	2234160	1	1		
EPABX	1578830		1578830	71364	25.00	91		71455	1507101				1578556	274	365		
DEF I Floor	13464427	0	13464427	474409	2.50	21836		496245	8223407	3893179	0	3893179	12612831	851596	873432		
Compound Wall	4555069	0	4555069	-3258	2.50	5988		2730	4318791				4321521	233548	239536		

Name of the Asset	Gross Block			Depreciation				Total	Capital Fund	Adjustment on account of				Total (9-10+13)	Net Block as on 31.3.2014	Net Block as on								
	As on 1.04.2013	Additions/Adjustment	Sale/Adjustment	Total	As on 1.4.13	Rate %	For the Year			Ad-Just.	Grants	Upto 31.3.13	For 2013-14				Adjustment	Total	Net Block as on 31.3.2014	Net Block as on				
																					Adjustment on account of			
																					Adjustment on account of			
Dining Halls	7702015			7702015	678508	2.50	31106		5779270				6488884	1213131	1244237									
CRMA Project	63960	0		63960	0		0		0	63960			63960	0	0									
RCTP Project	532802	0		532802	0		0		0	532802			532802	0	0									
Gymnasium	345195	0		345195	0	2.50	0		0	345195			345195	0	0									
Poly Green House	459946	0		459946	0	0.00	0		0	459946			459946	0	0									
Football Court	27000	360893		387893	675	2.50	9680		0	0			10355	377538	26325									
MOTOR VEHICLE	944111			944111		15.00	141617		0	0			141617	802494										
TOTAL	191700097	2422887	0	194122984	10009239		823733	0	99479685	65163924	0	0	175476582	18646402	17047248									
Upgradation of SEN-DOC																								
Equipment	3335751	0		3335751	1202876	15	20174		1531420	466959			3221429	114322	134496									
Fur. & Fix.	642699	149600		792299	131330	10	14960		218821	292547			657658	134641	1									
Telephone/ Telex	116597	0		116597	49073	25	0		67523	0			116596	1	1									
Borewell	99139	0		99139	0	0	0		99138	0			99138	1	1									
Books	4744836	0	9428	4735408	441503	7.5	30084		2645334	1256878			4373799	361609	401121									
Periodicals	3534407	160696		3695103	458821	7.5	93338		843758	1148019			2543936	1151167	1083808									
Computers	14551777	1447740		15999517	7958842	60	1015633		3266334	3081619			15322428	677089	244982									
Computers Upgradation	950954			950954	704815	60	18		79136	166973			950942	12	30									
Printers for Computers	302667	0		302667	229997	60	4618		19754	45219			299588	3079	7697									
Computer Tables	429259	114500		543759	127789	10	28979		126182	0			282950	260809	175288									
Computer Software	1965060	120000		2085060	1116355	60	97592		584771	221280			2019998	65062	42654									
Electronic Publications	1925915	0		1925915	0	0	0		917165	1008750			1925915	0	0									
Servers	1424607	0		1424607	246749	60	10115		1080200	80800			1417864	6743	16858									
Networking	1288004	150474		1438478	525158	60	11849		322502	420595			1280104	158374	19749									
Website	389118			389118	0	0	0		352443	36675			389118	0	0									
Consumables	743579			743579	154766	0	0		243925	344888			743579	0	0									
Bar Coding	59500			59500	0	0	0		59500	0			59500	0	0									
Bandwidth	1388009	0		1388009	555227	100	0		0	832782			1388009	0	0									
TOTAL	37891878	2143010	9428	40025460	13903301		1327361		12457906	9403984			37092552	2932908	2126686									
Schedule 8(a) Total	36892552	0		36892552	26439948		0		9669419	0			36109367	783185	783185									
GRAND TOTAL	266484527	4565897	9428	271040996	50352488		2151094.1		121607010	74567908			248678501.1	22362494.900	19957119									
Works-in-progress:																								
SME University-PE	359552		0	359552	0		0		0	0			0	359552	359552									
International Block-PE	0		0	0	0		0		0	0			0	0	8000									
Total WIP	0	0	0	359552	0		0		0	0			0	359552	367552									
GRAND TOTAL	266484527	4565897		271400548	50352488		2151094.1		121607010	74567908			248678501.1	22722046.900	20324671									

EMD/SECURITY DEPOSITS BROADSHEET - 2013-14

Date	Name of the Party	O.B.	Refund / Adjustment Rs.	Additions Rs.	Total
2/9/2009	CFC at Mubarakpur	35550	0	0	
22/03/2010	VIT University, Vellore (PI)	200000	0	0	
	CED, Madurai (PI)	200000	0	0	
	Suraj Foundation, Pune (PI)	200000	0	0	
	ALEAP, Hyderabad (PI)	200000	0	0	
20/04/2010	SRTRI, Pochampally	200000	0	0	
22/04/2010	CIPET, Hyderabad	200000	0		
	ASSIST, Ongole	200000	0	0	
26/04/2010	BEST	200000	0	0	
30/04/2010	BCT, Visakhapatnam	200000	0	0	
3/5/2010	CEDMAP, Bhopal	200000	0	0	
	CEDOK	200000	0	0	
	TIME Indl.&Entrepreneurship Dev.Instt.	200000	0	0	
	JSS Rudsetti, Chamarajanagar	200000	0	0	
	Matha Educational Trust	100000	0	0	
10/5/2010	GIEMA, Gulbarga	200000	0	0	
17/05/2010	PRDIS, Hyderabad	200000	0	0	
18/05/2010	Periyar Business Incubator	200000	0	0	
	VAPS, Madurai	200000	0	0	
19/05/2010	MITCON Consultancy, Pune	200000			
22/06/2010	IED, Dharmapuri	200000			
9/7/2010	ANGEL EDI, Goa	200000			
17/08/2010	AWAKE, Bangalore	200000			
18/11/2010	KITCO Ltd, Cochin	200000			
20/12/2010	EDI, Chennai	200000			
15/02/2011	MCED, Aurangabad	200000			
21/05/2010	Kendriya Bhandar, Hyderabad	1462700			
1/3/2011	Living Space, Somajiguda, Hyderabad	1050000			
3/9/2010	SD to DC(Handlooms), New Delhi	-177120	0	177120	0
9/8/2011	REEP Trust, Namakkal	20000	0	0	

Date	Name of the Party	O.B.	Refund / Adjustment Rs.	Additions Rs.	Total
15/3/2012	Abhinav Institute of Tech.&Mgt., Nasik	100000	0		
21/05/2012	Vidya Bharathi, PI	200000			
30/05/2012	POWER, PI	200000			
7/6/2012	Flory & Agricultural Trust, PI	200000			
	KSKSR Educational Trust, PI	200000			
14/09/2012	Women Assn.for Women Welfare Dev.	25000			
17/09/2012	Prabhath Education Society	25000			
	S.R. Communications	25000			
	Srinivas Technical Educational Society	25000			
	Murali Krishna Educational Society	25000			
	Microchip Solutions	25000			
	S.D. Techno Services	25000			
18/09/2012	SHARD	25000			
	PRISM Multimedia	25000			
	KPO Solutions	25000			
	AARDS	25000			
	"S" Mushroom Agritech	25000			
24/09/2012	Ventech Solutions	25000			
25/09/2012	Yamini Softech Pvt. Ltd.	25000			
	Sri Saraswathi Mahila Gruh Udyog	25000			
27/09/2012	Institute of Public Enterprises	25000			
	FRSD	25000			
	Dhanyata Training Consulting	25000			
	Sri Bhadra Eduational Academy	25000			
5/10/2012	SRAS Foundation	25000			
09/10/2012/	Apparel Retail Training & Job Solutions Pvt Ltd.25000				
	ADRO-IT Infogen Pvt. Ltd.	25000		25000	50000
	A.P Women's Cooperative Finance Corpn. Ltd	25000			

Date	Name of the Party	O.B.	Refund / Adjustment Rs.	Additions Rs.	Total
	Centre for Action on Disabled Rights & Empowerment	25000			
	Cyber World Computer Education	25000			
	Confederation of women Entrepreneurs	25000		200000	225000
	Coign Consultants Pvt Ltd.,	25000			
	Datapro Computers Pvt. Ltd.,	25000			
	DE-LA	25000		25000	50000
	Ennela Welfare Association	25000			
	Electronics Corpotation of India (ECIL)	25000			
	Ganti's Foundation	25000			
	Global Infosys	25000			
	H Computers Services	25000			
	IKYA Human Capital Solutions Pvt. Ltd.	25000			
	Institute for Training & Research for Entrepreneurship Deveopment	25000			
	Indira Mahila Vikas Foundation	25000			
	ISAN	25000			
	Janajagaran Kendra	25000			
	Jan Shikshan Sansthan -Malappuram	25000			
	Laurus Edutech Private Limited	25000			
	MPCON Limited	25000			
	Meher Software Solutions	25000			
	National Environment & Education Development	25000			
	Noble Educational Empowerment Society	25000			
	Peers Technologies Pvt Ltd	25000			
	Pondicherry Multipurpose Social Service Society	25000			
	Pothana Educational Society	25000			
	Ramananda Rural & Urban Devp. Society	25000			
	Rural Institute for People's Enlightenment	25000			
	Sahithi Systems Pvt Ltd.,	25000			

Date	Name of the Party	O.B.	Refund / Adjustment Rs.	Additions Rs.	Total
	Sampada Instt. Of social Awarness Samiti	25000			
	Sai Prathibha Educational Society	25000			
	School of Animation	25000			
	Society for Natural Environment and Human Awarness	25000			
	Softech IT solutions	25000			
	Self Rural Empowerment & Educational services Organization	25000			
	Shri Technologies	25000			
	Shiva Computers	25000			
	SIERRA (Software Systems & Solutions)	25000			
	SKILLPRO		25000		
	Skylark Infowaves Pvt Ltd	25000			
	Surabhi Educational Society	25000			
	Thredz Information Technology Pvt. Ltd.,	25000			
	Trylogic Soft Solutions AP Private Lintied	25000			
	Vijaya Bharathi Sarvodaya Mahila Mandali	25000			
	Society for Applied Educational Research	25000			
6/2/2013	Kerala Furniture (CCI), Kerala	25000			
27.05.2013	M/s.Anitha communications	20000		20000	
13.06.2013	M/s.GRASS Trust	25000		25000	
12.08.2013	M/s.Kalinga institute of Tech. Bhubaneswar		200000		200000
26.08.2013	VEDA, Hyderabad			25000	25000
26.08.2013	M/s.LAAP Tech. Academy, Hyd			25000	25000
26.08.2013	M/s.Max Mobile&Computers,hyd			25000	25000
27.08.2013	NEWS, Hyd			25000	25000
29.08.2013	M/s.Mother Teresa Mahila Mandali, Hyd			25000	250000
2.09.2013	M/s.Sprice Technologies, Ongole			25000	25000
12.09.2013	M/s.Pilapu Social Service Orgn, Hyd			25000	25000
17.09.2013	M/s.S.N.Tech Solutus Pvt Ltd.,			25000	25000
	Total	7583557	0	872120	8455677

Annexure A
SCHEDULE OF DEPOSITS AS ON 31 MARCH 2013

Date	Name of the Organisation	Rs.	Date returned
22.10.2013	M/o. Food Processing Industries, New Delhi	0	02.05.13
31.10.2013	NBCFDC, New Delhi	0	14.02.14
12.12.2013	KVIC, Mumbai	10000	
31.03.2013	A.P.Food Processing Society, Hyderabad	100000	
	Total	110000	

SCHEDULE :7 CURRENT LIABILITIES

OUTSTANDING EXPENSES	Rs.
OUTSTANDING EXPENSES	242000
Salaries payable to Employees	2980318
Remuneration consultants payables	475513
Video film on ni-msme	35000
BRB-Engagement of designer payable	120000
MBK-Engagement of designer payable	100000
DA arrears payable	342579
Bonus Payble	224510
NS-ToTs payables	130000
ESE-Telephone charges	94354
ESE-Electricity charges	345408
ESE-Water charges	410870
Audit fee payable	44944
Audit fee for Internal audit payable	27000
ESE-House keeping expenses payable	192360
CPF of nisiet trust	285779
Jubilee hills Filling Station	54239
Expenditure pertaining to Previous year	232274
Vendor development Programme	2129890
M.R.building	216000
V.B.Constructions	110200
Photon Enterprises	21000
Origins Interior Decorators &civil Construction	20452
Salora communications	2466
Jayahoo Publications	28600
Srikaa Aqua Minerals	1425
M/s.ORIENTAL SKILLS AND SAFETY SERVICESPVT	15847326
M/s.S.N.TECH SOLUTUS PVT LTD.,	1809600
M/s.YAMINI SOFT TECH PVT LTD.,	1502800
	28026907

Schedule-11 Fixed Deposits

1	IDBI, Jubilee Hills	10000000
2	Bank of Maharashtra	20000000
3	Andhra bank, SR Nagar	30000000
4	SBI, Balkampet	20000000
5	Andhra Bank, Srinagar Colony	40575000
6	SBH, Punjagutta	15000000
7	KVB SR Nagar	25000000
	TOTAL	160575000

Description (Programmes /Projects)	2013-14			2012-13		
	Income Rs.	Expenses Rs.	Surplus Rs.	Income Rs.	Expenses Rs.	Surplus Rs.
ATI Programmes	2941.33	2553.57	387.76	2318.53	2252.26	66.27
National Announced	233.87	120.36	113.51	149.54	81.9	67.64
National Sponsored	383.72	366.25	17.47	134.75	63.5	71.25
Seminars & Workshops	35.28	9.81	25.47	85.85	34.62	51.23
Sub-Total National Programmes	3594.20	3049.99	544.21	2688.67	2432.28	256.39
International	560.62	504.15	56.47	645.63	486.81	158.82
Research & Consultancy	38.18	32.48	5.7	28.95	25.07	3.88
Other income	156.77	0	156.77	78.41	12.52	65.89
Total	4349.77	3586.62	763.15	3441.66	2956.68	484.98
Growth in %	26%			59%		

**NATIONAL INSTITUTE FOR MICRO, SMALL AND MEDIUM ENTERPRISES, HYDERABAD 500045
RECEIPTS AND PAYMENTS FOR THE YEAR ENDING 31st MARCH 2014**

RECEIPTS	Amount - Rs.		PAYMENTS	Amount - Rs.	
	2013-14	2012-13		2013-14	2012-13
I. OPENING BALANCES			I. EXPENSES		
(a) Cash in hand	200119	666712	(a) Establishment Expenses:		
(b) Bank balances:			(i) Pay and allowances	37472447	39662943
(1) SBI, Yellareddyguda	7316	11843	(ii) Contribution to EPF	3477913	3654230
(2) Andhra Bank	7684558	4310029	(iii) EL encashment in service	165145	204325
(3) Andhra Bank, S.R.Nagar	201126	596498	(iv) Allowances and Bonus	1069197	1104224
(4) SBI, Balkampet	545806	5126795	(v) Staff welfare	255558	203004
(5) IDBI, Jubilee Hills	1200000	0	(vi) Encashment of EL on superannuation	1796251	2696493
(c) In deposits accounts			(vii) Death-cum-Retirement Gratuity	3230102	6343417
(1) Andhra Bank, Srinagar Colony Branch	24000000	34000000	Total I(a)	47466613	53868636
(2) SBI, A.C. Guards Branch	0	10000000	(b) Administrative Expenses:		
(3) Andhra Bank, S.R.Nagar Branch	20000000	10000000	(i) Travelling expenses	270147	45000
(4) SBI, Balkampet	10000000	0	(ii) EC/GC/Society meeting expenses	99579	248460
(5) Indian Bank, Srinagar Colony	10000000	0	(iii) Audit Fees (including internal audit)	81000	165337
(6) IDBI, Jubilee Hills	10000000	0	(iv) Advertisement & Publicity	264322	123646
(7) Andhra Bank, Srinagar Colony	575000	0	(v) Natural calamities relief	109638	0
(d) In Savings accounts:			(vi) Repairs and Maintenance	1748520	980207
(1) SBI, Yellareddyguda	65783	1064981	(vii) Legal Expenses	0	170104
(2) SBI, Balkampet	3304556	2942388	(viii) Office expenses and stationery	423318	241467
(3) Andhra Bank (IGNOU)	9203	7869	(ix) Bank charges	16234	28148
Total I (b)	87593348	68060403	(x) Property Tax	1129139	1115461
Total I	87793467	68727115	Implementation of Official Language (Hindi)	0	14500
II. GRANTS RECEIVED			Golden Jubilee Celebrations Expenditure	3582965	
(a) From Government of India:			Total I(b)	7724862	3132330
1.M/o.MSME for ToTs/EDPs/ESDPs	266068270	143431620	(c) Activity Expenses:		
2.M/o.Social justice & Empowerment	1325000	0	(i) National Announced Programmes	4526315	2271548
			(ii) National Sponsored Programmes	2832546	74554929

3.DGE&T, M/o.Labour & Employment	0	1321200	(iii) International Programmes	24960960	25999406
4.DC (MSME)	0	309000	(iv) Seminar and Workshops	95824	453352
5.Deptt.of Science & Technology	1781500	367500	(v) Research & Consultancy Projects	156180	110050
6.M/o.Minority Affairs,Goi	6054000	0	(vi) Educational Programmes	4339050	3959252
7.Ministry of External Affairs	23928583	28098403	(vii) Skill upgradation for contract workers of HPCL	4825144	
8.Ministry of Finance	0	1040000	(viii)DICCII-APIIC joint programme on industrial cam	474720	
9.Ministry of Labour Commissioner,Govt. of A.P	9835495	0	(ix)Rau's IAS Study Circle(Spon.by Min.of minority)	4000000	
10.KVIC, Mumbai, M/o.MSME	0	1080000	Total I(c)	46210739	107348537
11.DC(Handicrafts)	0	375000			
12.Min. of Housing and Urban Poverty	750000	1350000			
13.M/o MSME for Evaluation Project	0	230000	(d) Comon Essential Services:		
14.M/o Govt of Andhra Pradesh	0		(i) Business development expenses	912557	297910
Total II(a)	309742848	177602723	(ii) Photo and video charges	49973	56770
(b) From State Governments			(iii) Xerox charges	504244	365001
1.Industries Deptt., Kerala	0	240000	(iv) Training of Faculty in India	0	24619
2.Industries Deptt., Andhra Pradesh	0	8260236	(v) Postage and telegrams	497289	234742
3.Industries Deptt., Karnataka	0	500000	(vi) Electricity charges	3712603	2811305
4.NFDB, M/o Agriculture	0	49976	(vii) Water charges	2413451	2432267
5.Govt. of A.P. for Herbal Nursery	800000	1200000	(viii) House keeping expenses	3400307	934881
6.Govt. of A.P.	500000		(ix) Catering charges	11901506	7010601
Total II(b)	1300000	10250212	(x) Printing and binding charges	1436609	1187600
(c) From Other Sources			(xi) SENDOC expenses	2885	23181
1.NMDC	0	794700	(xii) CCIT expenses	1218661	987970
2.NBCFDC, New Delhi	0	90000	(xiii) Membership with others	43320	48924
Total II(c)	0	884700	(xiv) Telephones	480594	427090
Total II	311042848	188737635	(xv) Vehicles hire charges	1568180	1150417
III. INTEREST RECEIVED			Film on ni-msme	58500	135000
(a) On Bank Accounts	8525291	6967646	Total I(d)	28200679	18128278
(b) Loans, Advances, etc.	0	0			
Total III	8525291	6967646	TOTAL I	129602893	182477781
IV. OTHER INCOME			II. PAYMENTS MADE AGAINST FUNDS		

(a) From Activities:									
(i) National Announced Programmes	1701000	1800400							0
(ii) National Sponsored Programmes	0	35361							155580
(iii) Seminars and Workshops	1007794	220116							138110
(iv) Collaborative Seminars/Workshops	1656705	1368306							78568
(v) Research/Consultancy Projects	881300	239875							3484
(vi) Collaborative Programs	3311840	1651514							2435
(vii) International Sponsored Programmes	416794	4660971							74298
(viii) National Programmes - IT	8115500	6813000							87415
(ix) Program Certification - Bloomsoft Pvt. Ltd	0	861551							37417
(x) Program Certification - Tredz Technologies	0	110500							112419
(xi) RCTP Activities Income	0	39759							689726
(xii) MBA Live Projects	0	171000							
Total IV (a)	17090933	17972353							
(b) Others									
(i) Library Membership Fee	799000	924500							149600
(ii) Subscription/sale of publications	53450	49820							408283
(iii) Infrastructure services	349842	594268							256600
(iv) Licence Fee for Quarters	0	85588							110200
(v) Sale of scrap	51360	6460							342800
(vi) Accrued income	19208318	1470609							160696
(vii) Prior period income	0	48170							0
(viii) Application fee for posts	7590	20							1447740
(ix) IPFC Membership Fee	168500	150500							120000
(x) Application Fee from Partner Institutions	74700	50000							150474
(xi) Premises Lease	41243	0							0
(xii) Boarding Charges	0	8250							267291
(xiii) Sponsorships & Advertisements in Souvenir	0	50000							360893
									15000
									1161692
									133638
									582320
									0
									0
									114454
									42402
									0
									70000
									92335
									345195
									513731
									15000

(xiii) Sponsorships for Golden Jubilee Celebrations	1390000		(xiv) Motor vehicle	944111	0
			(xv) Computer Table	114500	8000
			Construction of International Block		96260
			Staff Quarters		70471
			Electric Substation		359552
			SME University-Preliminary Expenses	89888	3605050
Total IV (b)	22144003	3438185	Total III	4923076	
			IV. OTHER PAYMENTS		
(i) KVIC	500000	0	(1) Outstanding expenses	164621	1910978
(ii) MEA	22845069	0	(2) Deposits (Participation in Tenders)	270000	1125000
(iii) NBCFDC	90000	405000	(3) Prior period expenses	0	418462
(iv) SBI	150000	0	(4) DCRG payable	95362	0
(v) Govt. of Andhra Pradesh	212420	0	(a) EEL payable	58512	0
(vi) Ministry of MSME	86772110	10689557	(5) Loans and Advances given to Staff:		
(vii) M/o. Housing & UPA	1350000	0	(i) Festival Advance	94875	108000
(viii) DIC Amaravathi	0	0	(ii) Tour advance	636989	514391
(ix) M/o. Food Processing Industries	0	3256286	(iii) Court attachment	5853	
(x) DST (through EDI)	0	262500	(6) LTC Advance	88208	115278
(xi) DC (Handlooms), M/o. Textiles	0	7548300	(7) Deposit with Service Tax Tribunal	0	1500000
(xii) Niper	355919		(8) Payment to Creditors	490000	991990
(xiii) Govt of Westbengal	280000		(9) Grant Refundable to DPE	0	2064000
Total IV(c)	11255518	22161643	(10) Income Pertaining to Previous Years	0	500000
Total IV	151790454	43572181	(11) EMD/Security Deposits	25315	1800000
			(12) DA arrears Payable	570436	320748
			(13) Consultants Remuneration Payable	4060949	3083902
V. OTHER RECEIPTS			(14) TDS from suppliers	10717596	4747714
(a) Loans and Advances recovered from Staff:					
			TOTAL IV	17278716	19200463
(i) House Building Advance	5276	0	V. PAYMENTS TO AGENCIES		
(ii) Temporary advance	38057	32694	1. Agencies of APEX Programmes	130642341	7460834
(iii) Tour advance	73063	86158	2. Partner Institutions	83639490	12596368
			TOTAL V	214281831	20057202

(b) Sundry creditors:									
(ii) Programme Advance.	15474	80112						147550	200119
(iii) V.R. Associates, Architects	0	0							
(iv) RDS Consulting Architects	0	0						31155	7316
								387756	7684558
								719126	201126
								104854	545806
								1797856	1200000
(c) Others:									
(i) Books	3038	0						40000000	24000000
(ii) Deposits	1455000	125000						15000000	0
(iii) Withheld Salaries	0	0						30000000	20000000
(iv) LTC Advance	2368	5582						20000000	10000000
(v) LIC	0	0						0	10000000
(vi) Refund of Income Tax on income	0	0						10000000	10000000
EMD/Security Deposits	872120	4200000						575000	575000
Staff Deductions	0	202610						25000000	
Refunds Received or Recoveries made	0	1633554						20000000	
TOTAL V	2464396	6365710						466205	65783
								30601168	3304556
								9544	9203
								194840214	87793467
TOTAL	561616456	314370287						561616456	314370287

Admn. & Accounts Officer

Chief Administrative Officer

Director General

टोल फ्री उद्यमी हेल्पलाइन

Toll - Free Udyami Helpline

In a communique M/o MSME informed about the Udyami Helpline
(a call centre of MSMEs) setup since 21 August 2010.

Accessible on a National Toll-free number
1800-180-6763 on all days from 6 am to 10 pm



NATIONAL INSTITUTE FOR MICRO SMALL AND MEDIUM ENTERPRISES

राष्ट्रीय सूक्ष्म, लघु और मध्यम उद्यम संस्थान (निस्समे)

(An organisation of Ministry of MSME Govt. of India)

(सू.ल.म.उ.मंत्रालय भारत सरकार का संगठन)

Yousufguda, Hyderabad, Telangana 500045

यूसुफगुडा, हैदराबाद-५०००४५. तेलंगाना.

Tel: +91-40-23608544, Fax: +91-40-23608547, Email: editor@nimsme.org, Website: www.nimsme.org